

HOME ARTS TEXTILES PREMIUM LIST

DIRECTOR IN CHARGE

Candace Blancher

SUPERINTENDENT

Nancy Dekeyser

CONTEST COORDINATOR

Sue Horton

ENTRIES COORDINATOR

Sharon Wischmeier

TEXTILE DEMONSTRATION COORDINATOR

Kathy Brooks

HOME ARTS OFFICE

(253) 841-5063

Beginning July. 31, 9 am – 12 pm,
and Fairtime during building hours

COMPETITIVE EXHIBITS OFFICE

Washington State Fair

Hours: Mon.–Fri., 8 am – 4:30 pm

Phone: (253) 841-5074

Email: CompExhibits@thefair.com

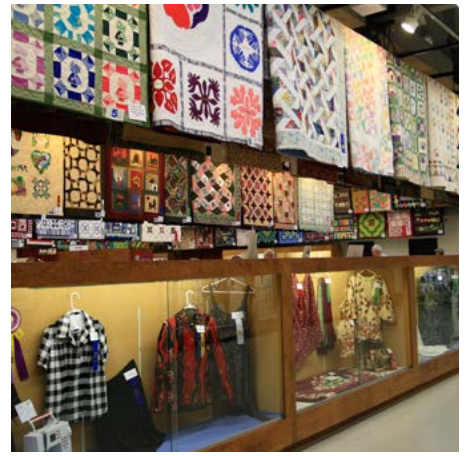
WASHINGTON STATE FAIR

AUG. 31 – SEPT. 23, 2018

(CLOSED TUESDAYS & SEPT. 5)

110 9th Avenue SW, Puyallup WA 98371-6811

24-Hour Hotline: 253-841-5045 | THEFAIR.COM



2018 HOME ARTS CALENDAR

| SUN | MON | TUE | WED | THU | FRI | SAT |
|---|---|---|--|---|---|---|
| Online Entry Registration Due for Table Setting by 10 pm on WEDNESDAY, JULY 25, 2018 | | | | | | |
| AUG. 5 | AUG. 6 | AUG. 7 | AUG. 8 | AUG. 9 | AUG. 10 | AUG. 11 |
| | <i>Online Entry Registration Due by 10pm for Quilt Challenge</i> | | | | | |
| AUG. 12 | AUG. 13 | AUG. 14 | AUG. 15 | AUG. 16 | AUG. 17 | AUG. 18 |
| | | | <i>Online Entry Registration Due by 10pm for Textiles & Preserved Foods</i> | | <i>BRING ENTRIES for Textiles & Preserved Foods 9am-4pm</i> | <i>BRING ENTRIES for Textiles & Preserved Foods 9am-4pm</i> |
| AUG. 19 | AUG. 20 | AUG. 21 | AUG. 22 | AUG. 23 | AUG. 24 | AUG. 25 |
| <i>BRING ENTRIES for Textiles & Preserved Foods 12pm-6pm</i> | | | | <i>Online Entry Registration Due by 10pm for Culinary Arts</i> | | |
| AUG. 26 | AUG. 27 | AUG. 28 | AUG. 29 | AUG. 30 | AUG. 31 | SEPT. 1 |
| | | <i>BRING ENTRIES for Culinary Arts & Table Setting, 11am-6pm</i> | | | OPENING DAY OF FAIR | |
| SEPT. 2 | SEPT. 3 | SEPT. 4 | SEPT. 5 | SEPT. 6 | SEPT. 7 | SEPT. 8 |
| | | FAIR CLOSED | FAIR CLOSED <i>Online Entry Registration Due by 10pm for Salsa Showdown</i> | <i>BRING ENTRIES for Salsa Showdown 4:30pm-6:30pm</i> <i>Online Entry Registration Due by 10pm for C&H Sugar Parent-Child Cookie Contest and Apple Dessert Contest</i> | <i>BRING ENTRIES for Apple Dessert Contest 4:30-6:30pm</i> <i>Online Entry Registration Due by 10pm for Brown & Haley Baking & Confection, ADULT CONTEST</i> | <i>BRING ENTRIES for C&H Sugar Parent-Child Cookie Contest 10:30am-12:30pm</i> |
| SEPT. 9 | SEPT. 10 | SEPT. 11 | SEPT. 12 | SEPT. 13 | SEPT. 14 | SEPT. 15 |
| <i>Online Entry Registration Due by 10pm for Fastest Fingers in the West</i> | <i>• Fastest Fingers in the West Contests</i> <i>• Brown & Haley ADULT CONTEST 4:30pm-6:30pm</i> <i>Online Entry Registration Due by 10pm for Chili Challenge</i> | FAIR CLOSED | <i>BRING ENTRIES for Chili Challenge 4:30pm-6:30pm</i> <i>Online Entry Registration Due by 10pm for The Great American Spam Championship</i> | <i>Online Entry Registration Due by 10pm for Brown & Haley Baking & Confection, PARENT-CHILD CONTEST</i> | <i>BRING ENTRIES for Great American Spam Contest 10:30am-12:30pm</i> | <i>Online Entry Registration Due by 10pm for Rhubarb Pie Contest</i> <i>• Brown & Haley PARENT-CHILD CONTEST 10:30am-12:30pm</i> |
| SEPT. 16 | SEPT. 17 | SEPT. 18 | SEPT. 19 | SEPT. 20 | SEPT. 21 | SEPT. 22 |
| | <i>Online Entry Registration Due by 10pm for Original Famous Fair Scone Contest</i> <i>BRING ENTRIES for Rhubarb Pie Contest 10:30am-12:30pm</i> | FAIR CLOSED | <i>Online Entry Registration Due by 10pm for Best Jam & Jelly Contest</i> <i>BRING ENTRIES for Original Famous Fair Scone Contest 10:30am-12:30pm</i> | | <i>BRING ENTRIES for Best Jam and Jelly Contest 10:30am-12:30pm</i> | |
| SEPT. 23 | SEPT. 24 | SEPT. 25 | SEPT. 26 | SEPT. 27 | SEPT. 28 | SEPT. 29 |
| LAST DAY OF FAIR | | <i>Release of all entries and exhibitors may pick up ribbons, 9am-8pm</i> | <i>Release of all entries and exhibitors may pick up ribbons, 9am-6pm</i> | | | |

CONTENTS

| | |
|---|----------|
| 2018 CALENDAR | 2 |
| Links to important Fair Information | 4 |
| Online Entry Registration Instructions | 4 |
| Entry & Release Schedules Also, See Calendar on Page 2 | 5 |
| Home Arts Information and General Rules | 6 |
| Division 100 – Clothing | 8 |
| Division 101 – Creative Stitchery | 9 |
| Division 117 – Professional / Master Creative Stitchery | 9 |
| Division 118 – NEW! Machine Embroidery | 10 |
| Division 102 – Needlepoint | 10 |
| Division 103 – Crochet | 11 |
| Division 104 – Knitting | 11 |
| Division 105 – Washington State Fair Fastest Fingers in the West Contest | 12 |
| Division 106 – Large Quilts | 13 |
| Division 107 – Amateur / Professional Quilt Collaboration | 14 |
| Division 108 – Professional / Master Quilters | 14 |
| Division 109 – Small Quilts | 15 |
| Division 110 – Quilt Challenge | 16 |
| Division 111 – Rugs | 16 |
| Division 112 – Lace / Open Work | 17 |
| Division 113 – Weaving | 18 |
| Division 114 – Spinning | 19 |
| Division 115 – Basketry | 20 |
| Division 116 – Professional / Master Basket Maker | 20 |

PLEASE NOTE:

Please see separate
HOME ARTS - FOODS PREMIUM LIST
for **Preserved Foods**, **Culinary Arts**
and **Table Setting** entry information.

Click here:

[COMPETITIVE EXHIBIT ENTRIES](#)

Washington STATE FAIR

DO THE PUYALLUP!

AUG. 31 – SEPT. 23, 2018
(CLOSED TUESDAYS & SEPT. 5)

By submitting an entry into the Fair, exhibitors agree to abide by all rules, regulations and entry requirements of the Fair and of the department(s) to which they are submitting their entries. **It is important that exhibitors read and be familiar with the rules in this book, as well as:**

[Washington State Fair Departmental Exhibitors Rules and Regulations](#)

Vehicle Unloading Procedures:
[Vehicle Unloading Procedures](#)

Washington State Fair map:
[Washington State Fair map](#)

*You may not find it necessary to print this entire Premium List. While we ask that you **read and be familiar with the information in the Premium List prior to entry, please feel free to print just the pages you need.***

Online Entry Registration Instructions

Read below, then register entry information online before bringing items to Fair.

www.thefair.com

- Read the complete rules, department and division descriptions, and entry information in this Premium List **BEFORE** going to Online Entry Registration.
- Then go to the [ONLINE ENTRY REGISTRATION](#) page (*available starting in May*)
- Click [Register](#) or [Sign In](#)
 - Register using your First Name and Last Name and create a password (*write your password down or make sure it is something you will remember for future use.*) Fill in requested information, including email address. Click [Continue](#).
 - Select **Department** ex.: *Home Arts - Textiles*
 - Select a **Division** ex.: *Clothing, Division 100*
 - Select a **Class** ex.: *class 1032 - Costume*
 - Fill in all requested information for the class(es) you are entering, including a brief **Description** (*such as color, pattern, special material*)
- When all your information is complete, click [Add Entry to Cart](#) and follow instructions to check out. *There are NO ENTRY FEES in any of the Home Arts Divisions.*
(NOTE: If you think you may want to modify your entries, you may *save* your current session and *check out at a later session.* Be sure to **Check Out before the closing date listed for your classes; entries are not submitted to the Fair office until the check out process is complete.)**
- Fill in “**yes**” at the statement to agree to all the terms and conditions of entry as defined in this Premium List.
- Click [Submit](#).
- Please print and bring a copy of your online entry summary/receipt **with your entries** when you bring them to The Fair.
- Please contact us with any questions regarding online entry registration:
253-841-5074, CompExhibits@thefair.com

ENTRY & RELEASE SCHEDULES

Also, See Calendar on Page 2

ENTRY & RELEASE REGULAR SCHEDULE

Classes in the following divisions fall under the regular schedule of dates and times listed below for **Online Entry Registration, Bringing In Entry Items** and **Entry Release/Return**.

| | |
|---|--------|
| Div. 100 - Clothing..... | pg. 8 |
| Div. 101 - Creative Stitchery..... | pg. 9 |
| Div. 117 - Professional / Master Creative Stitchery.... | pg. 10 |
| Div. 118 - Machine Embroidery | pg. 10 |
| Div. 102 - Needlepoint..... | pg. 10 |
| Div. 103 - Crochet | pg. 11 |
| Div. 104 - Knitting | pg. 12 |
| Div. 106 - Large Quilts | pg. 14 |
| Div. 107 - Amateur / Professional Quilt | pg. 15 |
| Div. 108 - Professional / Master Quilters | pg. 15 |
| Div. 109 - Small Quilts | pg. 16 |
| Div. 111 - Rugs | pg. 17 |
| Div. 112 - Lace / Open Work | pg. 18 |
| Div. 113 - Weaving | pg. 19 |
| Div. 114 - Spinning | pg. 20 |
| Div. 115 - Basketry..... | pg. 21 |
| Div. 116 - Professional / Master Basket Maker..... | pg. 21 |

ONLINE ENTRY REGISTRATION

Online entry registration must be completed by deadlines listed. Print a copy of your on-line entry summary/receipt to bring with your items. See Online Entry Registration instructions on page 4.

TEXTILES & FIBER ARTS DIVISIONS:

Wed., August 15, 2018, by 10 pm

BRINGING IN ENTRY ITEMS

Please bring a copy of your online entry summary/receipt with your item(s). **MAIL-IN ENTRIES WILL NOT BE ACCEPTED.**

TEXTILES & FIBER ARTS DIVISIONS

Fri., August 17, 2018, 9 am – 4 pm

Sat., August 18, 2018, 9 am – 4 pm

Sun., August 19, 2018, 12 pm – 6 pm

ENTRY RELEASE/RETURN

ALL ENTRIES WILL BE RELEASED:

Tue., September 25, 9 am – 8 pm

Wed., September 26, 9 am – 6 pm

UNCLAIMED ITEMS WILL NOT BE STORED. ANYTHING REMAINING AFTER WEDNESDAY, SEPT. 26 WILL BE DONATED TO CHARITY OR DISCARDED.

ENTRY & RELEASE FOR SPECIAL CONTESTS

For certain classes and special contests, dates and times vary from the regular schedule above; these variations are noted in the class/contest information. **Please read the information carefully to be sure of the date and time for the contests you wish to enter.**

The following contests have dates or times that deviate from the Regular Schedule. See contest information for details:

| | |
|----------------------------------|--------|
| Div. 105 – Washington State Fair | |
| Fastest Fingers in the West..... | pg. 13 |
| Div. 110 – Quilt Challenge..... | pg. 17 |

HOME ARTS INFORMATION AND GENERAL RULES

WAYS TO PARTICIPATE

The Home Arts Department offers an opportunity for craft persons throughout the Puget Sound area and beyond to share the pleasure of their craft.

HANDCRAFTED ENTRIES

- **Textiles and Fiber Arts ***
- **Preserved Foods ***
- **Culinary Arts ***
- **Special Contests ***

**See separate Home Arts - Foods Premium List*

The pride of creating something beautiful and/or delicious and then submitting it for competition is worthy of celebration, regardless of whether the entry wins an award. The competition serves to increase participants' skill levels and heighten the appreciation and interest of the general public.

**There are NO ENTRY FEES
in any of the Home Arts Divisions.**

DEMONSTRATIONS

- **Textiles and Fiber Arts**
- **Culinary Arts**

Many talented artists will be sharing knowledge by way of demonstrations every day between 10:30 am – 9:00 pm. To volunteer, call the Competitive Exhibits Office: (253) 841-5074.

AWARDS

Each division with at least three exhibitors will have a purple and gold Grand Champion rosette and prize awarded to the most outstanding entry of that division. A lavender and white Reserve Champion rosette will also be given in each qualifying division. There may be one Blue, one Red and one White ribbon given in each class. Honorable Mention ribbons may be awarded. Only Purple, Lavender, Blue, Red and Award of Merit ribbons will receive money or prize premiums. Premium checks will be mailed in November.

ABSOLUTELY NO INFORMATION ON PLACINGS OR AWARDS WILL BE ANNOUNCED PRIOR TO FAIR'S OPENING.

DISPLAYS

All award-winning entries will be displayed, and every effort will be made to display all other entries. However, we reserve the right to withhold non-award winning entries from display. This right will be exercised ONLY if there is not sufficient space to display said entry in a safe and attractive manner. Any item not displayed will be held in a secure storage area of the Home Arts Department and the exhibitor will be notified prior to the Fair opening.

JUDGING

Judges are selected from professionals or highly accredited amateur artists working within their field of expertise. Neither paid Fair employees nor volunteers are eligible to judge in the department for which they work. Paid Fair employees or volunteers who judge any show or contest outside the department they work for must be pre-approved by their department supervisor. Fair exhibitors, including exhibiting employees, are not eligible to judge in their entry divisions.

RECEIVING AND RETURN

Walk through the Gold Gate entrance on 9th Ave SW west of Meridian St S on entry days. If you have heavy or oversized items you may drive through Gold Gate. Please refer to the Entry and Return Schedule on page 5 for receiving and return dates and times.

HOME ARTS ENTRIES - RULES

1. Entry registration must be made online for all Divisions by entry deadline. See page 4 for online entry step-by-step instructions and page 5 for entry schedule.
2. No entry fee will be charged.
3. All articles must be the handwork of the exhibitor. They must be finished within the last two years. No article can be exhibited a second year. NO SOILED OR OBVIOUSLY USED ITEMS WILL BE ACCEPTED.
4. ALL ITEMS WILL BE PLACED IN THE MOST SUITABLE CLASS. Each exhibitor shall be limited to ONE ENTRY PER CLASS; as to enter more would, in effect, be competing against oneself, i.e., one crocheted afghan, one crocheted pillow, etc. No pairs or sets except where specified. Entries may be reclassified by staff or judges.
5. The "OTHER" class will only be used if the item does not fit within any other class in a division.
6. All awards need not necessarily be awarded in each class at the discretion of the judge.
7. The Home Arts Department is for amateurs to compete and exhibit their work. Anyone grossing more than \$4000 per year from the sale of home arts-related products, or engaging in teaching a craft on a regular and structured class schedule, is considered a professional by The Washington State Fair and is not eligible to enter in the Home Arts Department, except for the professional/master sections in the quilting, creative stitchery, and basketry divisions. A quilt that is made by an amateur and a professional will go into the Amateur/Professional Division.

Thirteen classes are offered for professional/master quilters, five classes for professional/master creative stitchers, and five classes for professional/master basket makers. They will compete ONLY with one another, and not with participants of amateur status.

Master crafts persons are exhibitors who have won these amateur division championships once. Each division must

have at least three exhibitors competing for a Grand Championship to be awarded. See AWARDS previous page.

- 8. CRAFT PERSONS MUST BE AT LEAST 16 YEARS OLD,** except where noted. No separate designations or discriminations can be made. We have no provision for children’s entries at this time, and feel that it is unfair to both the child and the judge to ask them to compete with adults. Children ages 6–15 are encouraged to enter the Creative Kids Exhibit at the Spring Fair in April. You may download the Creative Kids premium list at www.thefair.com starting in February.
9. ALL ITEMS PLACED ON DISPLAY MUST REMAIN FOR THE FULL RUN OF THE FAIR. Only items not on display may be picked up before the end of the Fair.
10. The Washington State Fair assumes no responsibility for loss or damage. Every reasonable precaution will be used to protect items on display.

| JUDGES’ SCORE CARD | |
|---|-------------|
| CRAFTSMANSHIP – Technical execution | |
| 40% possible..... | _____ |
| DEGREE OF DIFFICULTY | |
| 20% possible..... | _____ |
| DESIGN – Proportion, line, color, individuality | |
| 20% possible..... | _____ |
| PRESENTATION – Finishing | |
| 20% possible..... | _____ |
| | TOTAL _____ |

Please read [The Washington State Fair Departmental Exhibitors Rules and Regulations \(link on page 4\)](#) and the [Home Arts General Rules on pgs. 6-7](#). Exhibitors must adhere to the general rules and the specific rules below.

Entry and Release dates on page 5 and Calendar on page 2.

DIVISION 100 – CLOTHING

(Sewing)

SOME THINGS JUDGES CONSIDER: Grain line, stitching, accuracy, pressing, seam finishing, grading and clipping, stains/soil, zippers and hems.

ADDITIONAL AWARDS:

Grand Champion – \$100 Gift Certificate

donated by Pacific Fabric,

four locations in the Greater Seattle area.

www.pacificfabrics.com



Reserve Grand Champion – \$25

CHILDREN'S WEAR

| Class | 1st | 2nd |
|--------------------------------------|------|-----|
| 1000. EVERYDAY WEAR..... | \$10 | \$5 |
| 1010. PARTY WEAR | \$10 | \$5 |
| 1030. CHRISTENING DRESS OR SET | \$10 | \$5 |
| 1032. COSTUME | \$10 | \$5 |
| 1040. OTHER..... | \$10 | \$5 |

TAILORING

| Class | 1st | 2nd |
|-----------------------------------|------|-----|
| 1050. SUIT, MEN'S OR WOMEN'S..... | \$10 | \$5 |
| 1060. COAT, BLAZER, JACKET | \$10 | \$5 |

SEPARATES

| Class | 1st | 2nd |
|--|------|-----|
| 1130. STRETCH FABRIC (swimsuit, ski wear, leotard, etc.) | \$10 | \$5 |
| 1140. JACKET | \$10 | \$5 |
| 1150. SKIRT, PANTS | \$10 | \$5 |
| 1170. BLOUSE OR SHIRT..... | \$10 | \$5 |
| 1190. DRESS, DAYTIME..... | \$10 | \$5 |
| 1200. VEST | \$10 | \$5 |
| 1205. OTHER..... | \$10 | \$5 |

SPECIAL OCCASION

| Class | 1st | 2nd |
|------------------------------|------|-----|
| 1210. WEDDING DRESS | \$10 | \$5 |
| 1220. LONG PARTY DRESS..... | \$10 | \$5 |
| 1230. SHORT PARTY DRESS..... | \$10 | \$5 |
| 1250. COSTUME | \$10 | \$5 |
| 1260. OTHER..... | \$10 | \$5 |

MISCELLANEOUS

| Class | 1st | 2nd |
|--|------|-----|
| 1280. NIGHTGOWN, SLIP, OTHER LINGERIE | \$10 | \$5 |
| 1285. APRON | \$10 | \$5 |
| 1290. PURSE/BAG..... | \$10 | \$5 |
| 1300. DOLL CLOTHES (doll up to 18" optional) ... | \$10 | \$5 |
| 1320. OTHER..... | \$10 | \$5 |

SPECIAL SEWING TECHNIQUES

(Garment constructed by exhibitor, i.e., no fusing or gluing on ready-made garments)

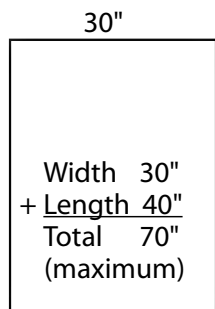
| Class | 1st | 2nd |
|---|------|-----|
| 1400. MANIPULATED SURFACE (e.g., pleating, woven strips)..... | \$10 | \$5 |
| 1402. SMOCKING | \$10 | \$5 |
| 1410. EMBELLISHMENTS (e.g., hand embroidery, beading)..... | \$10 | \$5 |
| 1415. NEW MACHINE EMBROIDERY EMBELLISHMENTS (free motion or computerized designs)..... | \$10 | \$5 |
| 1420. QUILTING TECHNIQUES, APPLIQUE, PATCHWORK..... | \$10 | \$5 |

Please read [The Washington State Fair Departmental Exhibitors Rules and Regulations \(link on page 4\)](#) and the [Home Arts General Rules on pgs. 6-7](#). Exhibitors must adhere to the general rules and the specific rules below.

Entry and Release dates on page 5 and Calendar on page 2.

DIVISION 101 – CREATIVE STITCHERY

All pictures must have strong WIRE hangers, no string or self-leveling hangers (e.g., _/\V\/_), and must not exceed



70" width and length combined, including frame. See example at left. Professional mounting and framing is permissible. Frame or glass is optional. No pairs or sets will be accepted. Judging will be based on completed piece including finishing and/or framing.

SOME THINGS JUDGES CONSIDER: Consistent direction of stitches, thread compatibility to fabric, proper tension, splitting threads, hoop outlines and/or soil, on-grain framing.

ADDITIONAL AWARDS:

Grand Champion – \$100

Reserve Grand Champion – \$25



The Evergreen Chapter of the Embroiderer's Guild of America

will award \$50 cash, a certificate, and a ribbon. The award will be based on originality and stitching excellence.

TRADITIONAL EMBROIDERY

| Class | 1st | 2nd |
|---------------------------------|------|-----|
| 2000. PICTURE..... | \$10 | \$5 |
| 2010. SMALL ARTICLE..... | \$10 | \$5 |
| 2020. MEDIUM ARTICLE..... | \$10 | \$5 |
| 2030. LARGE ARTICLE..... | \$10 | \$5 |
| 2040. YOUR ORIGINAL DESIGN..... | \$10 | \$5 |

COUNTED THREAD

| Class | 1st | 2nd |
|---|------|-----|
| 2050. PICTURE, (e.g., cross stitch) up to 24" length plus width..... | \$10 | \$5 |
| 2060. PICTURE, (e.g., cross stitch) 25" to 36" length plus width..... | \$10 | \$5 |
| 2070. PICTURE, (e.g., cross stitch) 37" to 48" length plus width..... | \$10 | \$5 |
| 2080. PICTURE, (e.g., cross stitch) 49" to 70" length plus width..... | \$10 | \$5 |
| 2090. PICTURE DONE ON LINEN, up to 24" length plus width..... | \$10 | \$5 |
| 2091. PICTURE DONE ON LINEN, 25" to 36" length plus width..... | \$10 | \$5 |
| 2092. PICTURE DONE ON LINEN, 37" to 48" length plus width..... | \$10 | \$5 |
| 2095. PICTURE DONE ON LINEN, 49" to 70" length plus width..... | \$10 | \$5 |

| | | |
|-------------------------------|------|-----|
| 2100. CHRISTMAS STOCKING..... | \$10 | \$5 |
| 2105. OTHER..... | \$10 | \$5 |

HARDANGER

| Class | 1st | 2nd |
|---|------|-----|
| 2111. HOUSEHOLD, up to 12" in diameter..... | \$10 | \$5 |
| 2112. HOUSEHOLD, 12" to 24" in diameter..... | \$10 | \$5 |
| 2113. HOUSEHOLD, larger than 24" in diameter.. | \$10 | \$5 |
| 2114. FRAMED..... | \$10 | \$5 |
| 2115. OTHER (e.g. pulled, cut, mixed, garment, etc.)..... | \$10 | \$5 |

OTHER STITCHERY

| Class | 1st | 2nd |
|---|------|-----|
| 2118. BUNKA..... | \$10 | \$5 |
| 2120. SMOCKING..... | \$10 | \$5 |
| (For Smocked Clothing, see Class 1402) | | |
| 2140. BRAZILIAN EMBROIDERY..... | \$10 | \$5 |
| 2150. SILK RIBBON EMBROIDERY..... | \$10 | \$5 |
| 2160. MULTI-MEDIA..... | \$10 | \$5 |
| 2170. YOUR ORIGINAL DESIGN..... | \$10 | \$5 |
| 2175. NEW CREWEL EMBROIDERY..... | \$10 | \$5 |
| 2180. OTHER..... | \$10 | \$5 |

AWARD OF MERIT

At the conclusion of the contest judges may designate up to two stitchery entries (other than the Grand and Reserve Grand Champions) for Awards of Merit – \$25 premium and a rosette.

DIVISION 117 – PROFESSIONAL / MASTER CREATIVE STITCHERY

Five classes are offered for professional/master creative stitcher. They will compete ONLY with one another and not with participants of amateur status. See rule 7 on page 6 for the definition of a professional.

ADDITIONAL AWARDS:

Grand Champion – \$100

Reserve Grand Champion – \$25

(A minimum of three exhibitors is required for granting this award – see page 6, "AWARDS".)

| Class | 1st | 2nd |
|---|------|-----|
| 2200. TRADITIONAL EMBROIDERY..... | \$10 | \$5 |
| 2205. COUNTED THREAD (eg. cross stitch)..... | \$10 | \$5 |
| 2210. HARDANGER..... | \$10 | \$5 |
| 2215. MACHINE EMBROIDERY..... | \$10 | \$5 |
| 2220. OTHER STITCHERY..... | \$10 | \$5 |

Please read [The Washington State Fair Departmental Exhibitors Rules and Regulations \(link on page 4\)](#) and the [Home Arts General Rules on pgs. 6-7](#). Exhibitors must adhere to the general rules and the specific rules below.

Entry and Release dates on page 5 and Calendar on page 2.

DIVISION 118 – NEW! MACHINE EMBROIDERY

Entries will be judged on embroidery styles and elements only. Example – a garment or quilt submitted to this division will be judged on embroidery alone. To be judged as a whole, quilts should be entered in a quilting division and garments into clothing division (Division 100).

SOME THINGS JUDGES CONSIDER:

Design, stabilizing the fabric, correct upper and lower tension and jump stitch trimming.

ADDITIONAL AWARDS:

Grand Champion - \$100
Reserve Grand Champion - \$25

FREE MOTION

| Class | | 1st | 2nd |
|-------|--|------|-----|
| 2300 | Large Quilt (at least 140 inches one length and one width combined) | \$10 | \$5 |
| 2305 | Small Quilt (less than 140 inches one length and one width combined) | \$10 | \$5 |
| 2310 | Adult Wearing Apparel | \$10 | \$5 |
| 2315 | Child Wearing Apparel | \$10 | \$5 |
| 2320 | Household Items | \$10 | \$5 |
| 2325 | Other | \$10 | \$5 |

PURCHASED DIGITIZED DESIGN

| Class | | 1st | 2nd |
|-------|--|------|-----|
| 2330 | Large Quilt (at least 140 inches one length and one width combined) | \$10 | \$5 |
| 2335 | Small Quilt (less than 140 inches one length and one width combined) | \$10 | \$5 |
| 2340 | Adult Wearing Apparel | \$10 | \$5 |
| 2345 | Child Wearing Apparel | \$10 | \$5 |
| 2350 | Household Items | \$10 | \$5 |
| 2355 | Other | \$10 | \$5 |

YOUR ORIGINAL DIGITIZED DESIGN

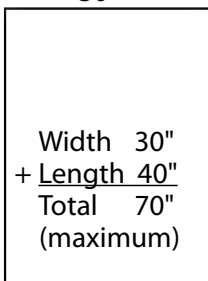
| Class | | 1st | 2nd |
|-------|--|------|-----|
| 2360 | Large Quilt (at least 140 inches one length and one width combined) | \$10 | \$5 |
| 2365 | Small Quilt (less than 140 inches one length and one width combined) | \$10 | \$5 |
| 2370 | Adult Wearing Apparel | \$10 | \$5 |
| 2375 | Child Wearing Apparel | \$10 | \$5 |
| 2380 | Household Items | \$10 | \$5 |
| 2385 | Other | \$10 | \$5 |

IN THE HOOP

| Class | | 1st | 2nd |
|-------|--|------|-----|
| 2390 | Large Quilt (at least 140 inches one length and one width combined) | \$10 | \$5 |
| 2395 | Small Quilt (less than 140 inches one length and one width combined) | \$10 | \$5 |
| 2400 | Other | \$10 | \$5 |

DIVISION 102 – NEEDLEPOINT

All pictures must have strong WIRE hangers, no string or self-leveling hangers (i.e. _/\^/\^/_), and must not exceed 70" width and length combined,



including frame. See example at left. Professional mounting and framing is permissible. Frame or glass is optional. No pairs or sets will be accepted. Judging will be based on completed piece including finishing and/or framing. No cross stitch will be accepted in this division.

SOME THINGS JUDGES CONSIDER:

Consistent direction of stitches, thread compatibility to fabric, proper tension, splitting threads, hoop outlines and/or soil, on-grain framing.

ADDITIONAL AWARDS:

Grand Champion – \$100
Reserve Grand Champion – \$25



The Evergreen Chapter of the Embroiderer's Guild of America

will award \$50 cash, a certificate, and a ribbon. The award will be based on originality and stitching excellence.

| Class | | 1st | 2nd |
|-------|--|------|-----|
| 2510. | PETIT POINT (Greater than 24 stitches per inch and executed entirely in tent stitch).. | \$10 | \$5 |
| 2520. | PICTURE, up to 24" length plus width | \$10 | \$5 |
| 2530. | PICTURE, 25" to 36" length plus width | \$10 | \$5 |
| 2540. | PICTURE, 37" to 48" length plus width | \$10 | \$5 |
| 2550. | PICTURE, 49" to 70" length plus width | \$10 | \$5 |
| 2560. | UNFRAMED NEEDLEPOINT PIECE | \$10 | \$5 |
| 2580. | PAINTED CANVAS WITH STITCH GUIDE. | \$10 | \$5 |
| 2590. | PAINTED CANVAS WITHOUT STITCH GUIDE.. | \$10 | \$5 |

AWARD OF MERIT

At the conclusion of the contest judges may designate up to two needlepoint entries (other than the Grand and Reserve Grand Champions) for Awards of Merit – \$25 premium and a rosette.

Please read [The Washington State Fair Departmental Exhibitors Rules and Regulations \(link on page 4\)](#) and the [Home Arts General Rules on pgs. 6-7](#). Exhibitors must adhere to the general rules and the specific rules below.

Entry and Release dates on page 5 and Calendar on page 2.

DIVISION 103 – CROCHET

Afghans not to exceed 150 inches width and length combined, but must be at least 96 inches width and length combined, except Class 3050. No framed, mounted or lined crochet work will be accepted.

***CROCHETED THREADS ARE IN DIVISION 112 ***

SOME THINGS JUDGES CONSIDER: Even stitches, even tension, blocking, even seams, cleanliness, ends, even outside edges

ADDITIONAL AWARDS:



Grand Champion – \$100 Gift Certificate **donated by Pacific Fabrics**, four locations in the Greater Seattle area. www.pacificfabrics.com

Reserve Grand Champion – \$25

HOUSEHOLD ITEMS, CROCHET

| Class | 1st | 2nd |
|--|------|------|
| 3020. AFGHAN, PIECED..... | \$15 | \$10 |
| 3030. AFGHAN, TUNISIAN (Afghan) STITCH | \$15 | \$10 |
| 3040. AFGHAN, ONE PIECE | \$15 | \$10 |
| 3050. AFGHAN, BABY | \$10 | \$5 |
| 3090. MISCELLANEOUS SMALL ITEMS..... | \$5 | \$3 |
| 3100. PILLOW..... | \$5 | \$3 |
| 3110. DOLL CLOTHES, 3 pieces or less (doll up to 12" optional – the judge must be able to see the inside of the clothes) | \$5 | \$3 |
| 3115. BED DOLLS, Pillow type only (no stand)..... | \$5 | \$3 |
| 3120. OTHER..... | \$5 | \$3 |

WEARING APPAREL, CROCHET

| Class | 1st | 2nd |
|---------------------------------------|------|------|
| 3130. DRESS, COAT, SUIT, ETC..... | \$15 | \$10 |
| 3140. SWEATER, VEST | \$10 | \$5 |
| 3150. CHILDREN'S WEAR..... | \$5 | \$3 |
| 3160. INFANT WEAR, SINGLE PIECE | \$5 | \$3 |
| 3170. INFANT WEAR, SET..... | \$10 | \$5 |
| 3180. SCARF, STOLE, SHAWL..... | \$5 | \$3 |
| 3190. HAT | \$5 | \$3 |
| 3200. MISCELLANEOUS SMALL ITEMS..... | \$5 | \$3 |
| 3210. OTHER..... | \$5 | \$3 |

DIVISION 104 – KNITTING

Afghans not to exceed 150 inches width and length combined. Thread bedspreads not to exceed 225 inches, width and length combined.

*** ENTER LACE TECHNIQUE BEDSPREADS, TABLECLOTHS AND DOILIES IN DIVISION 112 ***

SOME THINGS JUDGES CONSIDER: Even stitches, even tension, blocking, even seams, cleanliness, ends, even outside edges.

ADDITIONAL AWARDS:



Grand Champion – \$100 Gift Certificate **donated by Pacific Fabrics**, four locations in the Greater Seattle area. www.pacificfabrics.com

Reserve Grand Champion – \$25

HAND KNIT HOUSEHOLD ARTICLES

| Class | 1st | 2nd |
|---|------|------|
| 3510. AFGHAN, pieced | \$15 | \$10 |
| 3520. AFGHAN, one piece | \$15 | \$10 |
| 3530. BABY AFGHAN | \$10 | \$5 |
| 3550. DOLL CLOTHES, 3 pieces or less (doll up to 12" optional – the judge must see the inside of the clothes) | \$5 | \$3 |
| 3560. OTHER..... | \$5 | \$3 |

HAND KNIT WEARING APPAREL

| Class | 1st | 2nd |
|--|------|------|
| 3570. DRESS, COAT, SUIT, ETC (adult)..... | \$15 | \$10 |
| 3580. SWEATER, ADULT – CARDIGAN | \$10 | \$5 |
| 3590. SWEATER, ADULT – PULLOVER..... | \$10 | \$5 |
| 3600. VEST | \$5 | \$3 |
| 3610. DRESS, COAT, SUIT, ETC (children)..... | \$5 | \$3 |
| 3612. SWEATER, CHILDRENS – CARDIGAN | \$10 | \$5 |
| 3614. SWEATER, CHILDRENS – PULLOVER..... | \$10 | \$5 |
| 3616. CHILDREN'S WEAR, SET | \$10 | \$5 |
| 3620. INFANT WEAR, SINGLE PIECE | \$5 | \$3 |
| 3630. INFANT WEAR, SET..... | \$10 | \$5 |
| 3640. SCARF..... | \$5 | \$3 |
| 3642. FASHION YARN SCARF (boa, ruffled) | \$5 | \$3 |
| 3645. STOLE, SHAWL..... | \$5 | \$3 |
| 3650. HAT | \$5 | \$3 |
| 3655. BAG | \$5 | \$3 |
| 3660. SOCKS..... | \$5 | \$3 |
| 3665. GLOVES, MITTENS..... | \$5 | \$3 |
| 3670. OTHER..... | \$5 | \$3 |
| 3675. USE OF A CIRCULAR KNITTING DEVICE (e.g., Knifty Knitter) | \$5 | \$3 |

MACHINE KNITS

| Class | 1st | 2nd |
|-------------------------|-----|-----|
| 3700. AFGHAN..... | \$5 | \$3 |
| 3705. ADULT WEAR | \$5 | \$3 |
| 3720. INFANT WEAR | \$5 | \$3 |
| 3728. OTHER..... | \$5 | \$3 |

Please read [The Washington State Fair Departmental Exhibitors Rules and Regulations \(link on page 4\)](#) and the [Home Arts General Rules on pgs. 6-7](#). Exhibitors must adhere to the general rules and the specific rules below.

Entry and Release dates on page 5 and Calendar on page 2.

DIVISION 105 – WASHINGTON STATE FAIR FASTEST FINGERS IN THE WEST CONTEST

These events will be held in the Home Arts Department on the 2nd floor of the Pavilion. A maximum of 30 contestants will be accepted for each competition.

Four-ply knitting worsted, size 8 knitting needles and size I crochet hook will be provided by the Washington State Fair. Duplicate awards will be given for work of equal quality. Tatting shuttle and thread provided by the Washington State Fair.

**All three Fastest Fingers contests are on:
MONDAY, SEPTEMBER 10**

You may enter either:

Online by 10 pm the day before the contest (see page 4 for instructions), or **At the Home Arts Dept.** Up to 1/2 hour before contest time.

FASTEST FINGERS IN THE WEST

| Class | 1st | 2nd | 3rd |
|--------------------------------------|------------|------------|------------|
| 3736. TATTING CONTEST – 11:00 AM ... | \$30 | \$20 | \$10 |

| Class | 1st | 2nd | 3rd |
|-------------------------------------|------------|------------|------------|
| 3738. KNITTING CONTEST – 1 PM | \$30 | \$20 | \$10 |

The winners of the tatting and knitting contests will be those contestants who have knitted or tatted the greatest number of stitches with correct tension and workmanship during the 15-minute period. Any incomplete stitch or dropped stitch will be deducted from the total number of stitches completed.

| Class | 1st | 2nd | 3rd |
|---|------------|------------|------------|
| 3740. CROCHETED GRANNY SQUARE CONTEST – 3 PM | \$30 | \$20 | \$10 |

The crocheted granny square contest will be judged on workmanship and completion of the greatest number of stitches using directions provided.

Please read [The Washington State Fair Departmental Exhibitors Rules and Regulations \(link on page 4\)](#) and the [Home Arts General Rules on pgs. 6-7](#). Exhibitors must adhere to the general rules and the specific rules below.

Entry and Release dates on page 5 and Calendar on page 2.

DIVISION 106 – LARGE QUILTS

(At least 140 inches one length and one width combined)

Large quilts should be completed by only one person. Enter large quilts done by at least one amateur and one professional in Amateur/Professional Quilt Collaboration – Division 107

SOME THINGS JUDGES CONSIDER: Piecing/appliqué: technique, borders and sashing, quilting design and technique, binding or edges, corners, marking or soil.

Traditional quilts are defined as those made from historical designs that have been named and passed down from our ancestors. Contemporary quilts are “art quilts” that contain an element of creativity, are original and inventive, and are usually hung as art.



ADDITIONAL AWARDS:

Grand Champion –
Baby Lock “Anna” sewing machine,
valued at \$399, **donated by**
**Quality Sewing and Vacuum Center/
Tacony Corp.,** 2620 Bridgeport Way W,
Suite D, University Place, WA 98466

Reserve Grand Champion – \$25

HAND QUILTED

| Class | 1st | 2nd |
|---|------|------|
| 4000. PIECED | \$20 | \$15 |
| 4004. APPLIQUÉED..... | \$20 | \$15 |
| 4008. MIXED TECHNIQUES (e.g., appliquéd/pieced)..... | \$20 | \$15 |
| 4010 NEW ORIGINAL DESIGN | \$20 | \$15 |

SEWING MACHINE QUILTED

| Class | 1st | 2nd |
|---|------|------|
| 4020. TRADITIONAL PIECED | \$20 | \$15 |
| 4022. CONTEMPORARY PIECED..... | \$20 | \$15 |
| 4024. TRADITIONAL APPLIQUE | \$20 | \$15 |
| 4026. CONTEMPORARY APPLIQUE..... | \$20 | \$15 |
| 4028. MIXED TECHNIQUES (e.g., appliquéd/pieced)..... | \$20 | \$15 |
| 4029 NEW ORIGINAL DESIGN..... | \$20 | \$15 |
| 4030. OTHER..... | \$20 | \$15 |

MISCELLANEOUS QUILTING TECHNIQUES

| Class | 1st | 2nd |
|--|------|------|
| 4040. TIED..... | \$20 | \$15 |
| 4042. OTHER (e.g., yoyo, rag, cathedral window) .. | \$20 | \$15 |

(No quilting machine entries will be accepted)

(See division 118 for machine embroidery)

AMATEUR GROUP PROJECT

| Class | 1st | 2nd |
|--|------|------|
| 4050. HAND QUILTED – any technique..... | \$20 | \$15 |
| 4052. SEWING MACHINE QUILTED - any technique..... | \$20 | \$15 |

NEW

FIRST TIME PARTICIPANTS

| Class | 1st | 2nd |
|--|------|------|
| 4060. HAND QUILTED- any technique..... | \$20 | \$15 |
| 4062. SEWING MACHINE QUILTED- any technique | \$20 | \$15 |

AWARD OF MERIT

At the conclusion of the contest in each of the four Quilting Divisions, judges may designate up to two quilt entries (other than Grand and Reserve Grand Champions) for Awards of Merit (rosettes and \$25 premiums).

Please read [The Washington State Fair Departmental Exhibitors Rules and Regulations \(link on page 4\)](#) and the [Home Arts General Rules on pgs. 6-7](#). Exhibitors must adhere to the general rules and the specific rules below.

Entry and Release dates on page 5 and Calendar on page 2.

DIVISION 107 – AMATEUR / PROFESSIONAL QUILT COLLABORATION

This must be a quilt done by two or more persons including at least one amateur and one professional. See rule 7 on page 6 for the definition of a professional.

Large quilts measure at least 140 inches, width and length combined. Small quilts measure less than 140 inches, length and width combined.

Traditional quilts are defined as those made from historical designs that have been named and passed down from our ancestors. Contemporary quilts are “art quilts” that contain an element of creativity, are original and inventive, and are usually hung as art.

ADDITIONAL AWARDS:

Grand Champion – \$100
Reserve Grand Champion – \$25

| Class | 1st | 2nd |
|---|------|------|
| 4100. HAND QUILTED, large, | \$20 | \$15 |
| 4102. HAND QUILTED, small, | \$20 | \$15 |
| 4104. TRADITIONAL – large, machine quilted | \$20 | \$15 |
| 4106. TRADITIONAL – small, machine quilted | \$20 | \$15 |
| 4108. TRADITIONAL – appliqué..... | \$20 | \$15 |
| 4114. CONTEMPORARY – large, machine quilted . | \$20 | \$15 |
| 4116. CONTEMPORARY – small, machine quilted. \$20 | \$15 | |
| 4118. CONTEMPORARY – appliqué | \$20 | \$15 |
| 4119. MIXED TECHNIQUES | \$20 | \$15 |
| 4120. NEW ORIGINAL DESIGN | \$20 | \$15 |

DIVISION 108 – PROFESSIONAL / MASTER QUILTERS

These classes are offered for professional/master quilters. They will compete ONLY with one another and not with participants of amateur status. See rule 7 on page 6 for the definition of a professional. A master quilter is one who has won a Washington State Fair, amateur division once or served as a Washington State Fair quilt judge.

Large quilts measure at least 140 inches, width and length combined. Small quilts measure less than 140 inches, length and width combined.

Traditional quilts are defined as those made from historical designs that have been named and passed down from our ancestors. Contemporary quilts are “art quilts” that contain an element of creativity, are original and inventive, and are usually hung as art.

ADDITIONAL AWARDS:

Grand Champion – \$100
Reserve Grand Champion – \$25

| Class | 1st | 2nd |
|---|------|------|
| 4150. TRADITIONAL – large, hand quilted..... | \$20 | \$15 |
| 4152. TRADITIONAL – small, hand quilted..... | \$20 | \$15 |
| 4154. TRADITIONAL – large, machine quilted | \$20 | \$15 |
| 4156. TRADITIONAL – small, machine quilted | \$20 | \$15 |
| 4158. TRADITIONAL – appliqué..... | \$20 | \$15 |
| 4160. CONTEMPORARY – large, hand quilted | \$20 | \$15 |
| 4162. CONTEMPORARY – small, hand quilted | \$20 | \$15 |
| 4164. CONTEMPORARY – large, machine quilted. \$20 | \$15 | |
| 4166. CONTEMPORARY – small, machine quilted. \$20 | \$15 | |
| 4168. CONTEMPORARY – appliqué | \$20 | \$15 |
| 4169. MIXED TECHNIQUES | \$20 | \$15 |
| 4170. APPAREL AND MISC. ITEMS..... | \$20 | \$15 |
| 4172. GROUP PROJECT..... | \$20 | \$15 |

Please read [The Washington State Fair Departmental Exhibitors Rules and Regulations \(link on page 4\)](#) and the [Home Arts General Rules on pgs. 6-7](#). Exhibitors must adhere to the general rules and the specific rules below.

Entry and Release dates on page 5 and Calendar on page 2.

DIVISION 109 – SMALL QUILTS

(Less than 140 inches, length and width combined)

Small quilts should be completed by only one person.

Enter small quilts done by at least one amateur and one professional in Amateur/Professional Quilt Collaboration – Division 107.

Traditional quilts are defined as those made from historical designs that have been named and passed down from our ancestors. Contemporary quilts are “art quilts” that contain an element of creativity, are original and inventive, and are usually hung as art.

ADDITIONAL AWARDS:

Grand Champion – \$100

Reserve Grand Champion – \$25

SMALL QUILTS – HAND QUILTED

| Class | | 1st | 2nd |
|-------|---|------|------|
| 4200. | TRADITIONAL PIECED | \$20 | \$15 |
| 4202. | CONTEMPORARY PIECED..... | \$20 | \$15 |
| 4204. | TRADITIONAL APPLIQUE | \$20 | \$15 |
| 4206. | CONTEMPORARY APPLIQUE..... | \$20 | \$15 |
| 4208. | MIXED TECHNIQUES (e.g., appliquéd/pieced)..... | \$20 | \$15 |
| 4210. | OTHER..... | \$20 | \$15 |

SMALL QUILTS – MACHINE QUILTED

| Class | | 1st | 2nd |
|-------|---|------|------|
| 4220. | TRADITIONAL PIECED | \$20 | \$15 |
| 4222. | CONTEMPORARY PIECED..... | \$20 | \$15 |
| 4224. | TRADITIONAL APPLIQUE | \$20 | \$15 |
| 4226. | CONTEMPORARY APPLIQUE..... | \$20 | \$15 |
| 4228. | MIXED TECHNIQUES (e.g., appliquéd/pieced)..... | \$20 | \$15 |
| 4230. | OTHER..... | \$20 | \$15 |

BABY QUILTS – HAND QUILTED

| Class | | 1st | 2nd |
|-------|-------------------------------|------|-----|
| 4240. | PIECED | \$10 | \$5 |
| 4242. | APPLIQUÉD OR EMBROIDERED..... | \$10 | \$5 |

BABY QUILTS – MACHINE QUILTED

| Class | | 1st | 2nd |
|-------|--|------|-----|
| 4250. | PIECED | \$10 | \$5 |
| 4252. | APPLIQUÉD OR EMBROIDERED..... | \$10 | \$5 |
| 4254. | MACHINE APPLIQUÉD OR EMBROIDERED..... | \$10 | \$5 |

AMATEUR GROUP PROJECTS

| Class | | 1st | 2nd |
|-------|---------------------------------------|------|-----|
| 4260. | HAND QUILTED – any technique..... | \$10 | \$5 |
| 4262. | MACHINE QUILTED – any technique | \$10 | \$5 |

MISCELLANEOUS QUILTING TECHNIQUES

| Class | | 1st | 2nd |
|-------|------------|------|-----|
| 4265. | TIED..... | \$10 | \$5 |
| 4267. | OTHER..... | \$10 | \$5 |

PATCHWORK OR QUILTED MISC. ITEMS

| Class | | 1st | 2nd |
|-------|---|------|-----|
| 4272. | PILLOW..... | \$10 | \$5 |
| 4274. | MINIATURE QUILT (18” wide and 18” long, or less) | \$10 | \$5 |
| 4276. | OTHER..... | \$10 | \$5 |

NEW

FIRST TIME PARTICIPANT

| Class | | 1st | 2nd |
|-------|---|------|-----|
| 4278 | HAND QUILTED- any technique..... | \$10 | \$5 |
| 4280 | MACHINE QUILTED- any technique | \$10 | \$5 |

Please read [The Washington State Fair Departmental Exhibitors Rules and Regulations \(link on page 4\)](#) and the [Home Arts General Rules on pgs. 6-7](#). Exhibitors must adhere to the general rules and the specific rules below. Entry and Release dates on page 5 and Calendar on page 2.

DIVISION 110 – QUILT CHALLENGE

“WASHINGTON, OUR HOME”

Sponsored by
The Quilt Barn
2102 E Main Ave, Suite 102
Puyallup, WA 98372



The Quilt Challenge is open to all quilters 16 years and older.

Create a wall quilt using the theme, "Washington, Our Home" as your inspiration.

Register your entry online by August 6. When your online entry is received we will send you the 12 x 14 inch rectangle of fabric to begin this challenge project.

Refer to Calendar on page 2 or see dates in Entry & Release Regular Schedule on page 5 for Bringing In entry items and Entry Release/Return.

| Class | 1st | 2nd | 3rd |
|--|------|------|------|
| 4180. "Washington, Our Home" QUILT CHALLENGE..... | \$50 | \$30 | \$20 |

Prizes and 12" x 14" fabric pieces are donated by **The Quilt Barn**, Puyallup, WA.

QUILT CHALLENGE RULES

Your creation must utilize all of the fabric provided. Additional "Challenge" fabric may not be used.

Quilts must not exceed 72 inches, length and width combined.

Additional fabrics, shape, techniques and embellishments are of your choice.

DIVISION 111 – RUGS

Rugs may not exceed 192 inches, width plus length (e.g., 8' x 8'). Hangings may be mounted but must not exceed 70 inches, length plus width, including mountings.

ADDITIONAL AWARDS:

Grand Champion – \$100
Reserve Grand Champion – \$25

| Class | 1st | 2nd |
|--|------|-----|
| 4500. LATCHET | \$10 | \$5 |
| 4520. SHIRRET OR RUFFLE..... | \$10 | \$5 |
| 4525. HOOKED, PRIMITIVE..... | \$10 | \$5 |
| 4527. HOOKED, FINE SHADING | \$10 | \$5 |
| 4530. CROCHET..... | \$10 | \$5 |
| 4535. YOUR ORIGINAL DESIGN, ANY TYPE | \$10 | \$5 |
| 4540. RUG TYPE WALL HANGING | \$10 | \$5 |
| 4550. BRAIDED | \$10 | \$5 |
| 4555. PILLOW USING ANY RUG TECHNIQUE..... | \$10 | \$5 |
| 4560. OTHER..... | \$10 | \$5 |

All soft toys are to be entered in Hobby Hall. To enter sewn, crocheted and knit doll CLOTHES ONLY, see Home Arts Divisions 100, 103 and 104.

Please read [The Washington State Fair Departmental Exhibitors Rules and Regulations \(link on page 4\)](#) and the [Home Arts General Rules on pgs. 6-7](#). Exhibitors must adhere to the general rules and the specific rules below.

Entry and Release dates on page 5 and Calendar on page 2.

DIVISION 112 – LACE / OPEN WORK

Front and back of work must be visible.

ADDITIONAL AWARDS:

Grand Champion – \$100
Reserve Grand Champion – \$25

BOBBIN LACE

| Class | 1st | 2nd |
|---|------|-----|
| 5000. ALL-LACE PROJECTS, SMALL, up to 6" x 6" (e.g., book marks, medallions, etc.) | \$10 | \$5 |
| 5005. ALL-LACE PROJECTS, LARGE, Larger than 6" x 6" (e.g., pictures, doilies, etc.) | \$10 | \$5 |
| 5010. LACE AND FABRIC COMBINED | \$10 | \$5 |

NEEDLE MADE LACE

*SEE DIVISION 101 FOR HARDANGER

| Class | 1st | 2nd |
|---|------|-----|
| 5030. DRAWN, HOUSEHOLD (small – up to 12" in diameter) | \$10 | \$5 |
| 5040. DRAWN, HOUSEHOLD (medium – 12" to 24" in diameter). | \$10 | \$5 |
| 5050. DRAWN, HOUSEHOLD (larger than 24" in diameter, no mounting) | \$10 | \$5 |
| 5080. OTHER (e.g., pulled, cut, mixed, garment etc.) | \$10 | \$5 |

TOOL MADE LACE – TATTING

| Class | 1st | 2nd |
|--|------|-----|
| 5090. TATTING, DOILY. | \$10 | \$5 |
| 5100. TATTING, ORNAMENT, JEWELRY | \$10 | \$5 |
| 5120. TATTING, TRIMMED ITEM. | \$5 | \$3 |
| 5121. TATTING, 3-D ITEM. | \$5 | \$3 |
| 5122. TATTING, OTHER | \$5 | \$3 |

TOOL MADE LACE – CROCHET

| Class | 1st | 2nd |
|---|------|------|
| 5126. CROCHET, ORNAMENT. | \$5 | \$3 |
| 5130. CROCHET (small - up to 12" in diameter) . . . | \$5 | \$3 |
| 5135. CROCHET (medium - 13" to 24" in diameter) | \$5 | \$3 |
| 5140. CROCHET (larger than 24" in diameter). . . | \$10 | \$5 |
| 5145. CROCHET – TABLECLOTH, THREAD (not to exceed 225" width and length combined) | \$20 | \$15 |
| 5146. CROCHET – BEDSPREAD, THREAD (not to exceed 225" width and length combined) | \$20 | \$15 |
| 5147. CROCHET – GARMENTS, thread. | \$10 | \$5 |

| | | |
|--|------|-----|
| 5148. CROCHET – INFANT WEAR (3 pieces or less) | \$10 | \$5 |
| 5150. CROCHET DOLL CLOTHES, 3 pieces or less (doll up to 12" optional – the judge must see the inside of the clothes). . . | \$5 | \$3 |
| 5151. CROCHET, HOUSEHOLD ITEM. | \$5 | \$3 |
| 5154. CROCHET CLOTHING ACCESSORIES | \$5 | \$3 |
| 5157. CROCHET YARN MADE LACE. | \$5 | \$3 |
| 5158. CROCHET, OTHER. | \$5 | \$3 |

TOOL MADE LACE – KNIT

| Class | 1st | 2nd |
|---|------|------|
| 5162. KNIT – TABLECLOTH OR BEDSPREAD, thread (not to exceed 225" width and length combined) | \$20 | \$15 |
| 5164. KNIT – GARMENTS (very fine yarn only) . . . | \$10 | \$5 |
| 5166. KNIT – HOUSEHOLD ITEM | \$5 | \$3 |
| 5167. KNIT – BEADED ITEM. | \$5 | \$3 |
| 5168. KNIT – CLOTHING ACCESSORIES | \$5 | \$3 |
| 5172. KNIT - YARN MADE LACE | \$5 | \$3 |
| 5173. KNIT, OTHER. | \$5 | \$3 |

Please read [The Washington State Fair Departmental Exhibitors Rules and Regulations \(link on page 4\)](#) and the [Home Arts General Rules on pgs. 6-7](#). Exhibitors must adhere to the general rules and the specific rules below.

Entry and Release dates on page 5 and Calendar on page 2.

DIVISION 113 – WEAVING



ADDITIONAL AWARDS:

Grand Champion –
Baby Lock “Rachel” Sewing Machine
valued at \$799 **donated by**
**Quality Sewing and Vacuum Center/
Tacony Corp.**, 2620 Bridgeport Way W,
Suite #D, University Place, WA 98466

Reserve Grand Champion – \$25

HANDWOVEN HOUSEHOLD ARTICLE

Please include fiber content on
a 3 x 5 inch index card

| Class | 1st | 2nd |
|---|------|-----|
| 5510. BLANKET, AFGHAN OR COVERLET | \$10 | \$5 |
| 5515. BLANKET, AFGHAN OR COVERLET, (more than 4 harnesses)..... | \$10 | \$5 |
| 5520. TABLE RUNNER, SET OF 4 PLACE MATS OR TABLECLOTH..... | \$10 | \$5 |
| 5525. TABLE RUNNER, SET OF 4 PLACE MATS OR TABLECLOTH (more than 4 harnesses)..... | \$10 | \$5 |
| 5530. BATH OR KITCHEN TOWEL..... | \$5 | \$3 |
| 5535. BATH OR KITCHEN TOWEL (more than 4 harnesses) | \$5 | \$3 |
| 5540. YARDAGE (3 yard min., finished for intended use, state intended use) | \$10 | \$5 |
| 5550. TAPESTRY..... | \$10 | \$5 |
| 5560. HANDWOVEN RUG..... | \$10 | \$5 |
| 5565. OTHER..... | \$5 | \$3 |

HANDWOVEN MAGAZINE'S WEAVING FOR THE HOME AWARD OF EXCELLENCE

Interweave Press is offering *Handwoven Magazine's* WEAVING FOR THE HOME Award of Excellence. The purpose is to recognize and encourage excellence in hand weaving functional items for the home (no garments, wall hangings or art objects). Good design principles, suitability of materials and techniques to the intended use, excellent craftsmanship and a fresh or unexpected element are essential.

HANDWOVEN GARMENT

Please include fiber content on
a 3 x 5 inch index card

| Class | 1st | 2nd |
|---|------|------|
| 5570. OUTERWEAR (coat, poncho, cape) | \$15 | \$10 |
| 5585. BLOUSE SHIRT, SKIRT OR DRESS | \$10 | \$5 |
| 5590. VEST OR TABARD | \$10 | \$5 |
| 5595. OTHER GARMENT (embellishment woven with novelty yarn)..... | \$10 | \$5 |
| 5610. SHAWL, STOLE OR SHRUG..... | \$10 | \$5 |
| 5615. SCARF..... | \$5 | \$3 |
| 5620. ACCESSORIES..... | \$5 | \$3 |

HANDWEAVERS GUILD OF AMERICA AWARD

The Handweavers Guild of America Award will honor a piece in the Weaving, Spinning or Basketry Divisions, which:

- Shows a fresh individual approach and expresses personal creativity.
- Shows an awareness of aesthetic and functional considerations.
- Demonstrates competence in technical skill.

The award carries a certificate and a hand-woven ribbon.

Please read [The Washington State Fair Departmental Exhibitors Rules and Regulations \(link on page 4\)](#) and the [Home Arts General Rules on pgs. 6-7](#). Exhibitors must adhere to the general rules and the specific rules below.

Entry and Release dates on page 5 and Calendar on page 2.

DIVISION 114 – SPINNING

ADDITIONAL AWARDS:

Grand Champion – \$100
Reserve Grand Champion – \$25

HANDSPUN YARN

A 4x4 inch fabric swatch of the intended use of the yarn must accompany entry skein. May be knit, crocheted or woven. Please specify intended use, skein weight, yardage and fiber content on a 3x5 inch index card. We encourage you to include a small amount of fiber used in spinning in a small ziplock bag. Skein must be 1 oz. or more in weight. Yarn should be wound on a two-yard niddy-noddy and gently figure-eight tied in four places.

| Class | 1st | 2nd |
|--|-----|-----|
| 6000. WOOL – SINGLES | \$5 | \$3 |
| 6005. WOOL – 2 PLY – fine..... | \$5 | \$3 |
| 6008. WOOL – 2 PLY – medium..... | \$5 | \$3 |
| 6010. WOOL – 2 PLY – heavy | \$5 | \$3 |
| 6014. WOOL – MULTIPLE PLY | \$5 | \$3 |
| 6016. DROP SPINDLE YARN..... | \$5 | \$3 |
| 6020. BLENDED FIBERS..... | \$5 | \$3 |
| 6022. NOVELTY YARN, unusual technique..... | \$5 | \$3 |
| 6028. SILK | \$5 | \$3 |
| 6030. HAND DYED YARN,..... | \$5 | \$3 |
| 6038. PLANT FIBER (e.g., cotton, linen, ramie) | \$5 | \$3 |
| 6040. OTHER ANIMAL FIBER (e.g., dog, mohair).... | \$5 | \$3 |

USE OF HANDSPUN YARN

Include a 3 foot butterfly of yarn and fiber content on a 3 x 5 inch index card.

| Class | 1st | 2nd |
|---|------|-----|
| 6050. LOOM WOVEN ARTICLE | \$10 | \$5 |
| 6055. LOOM WOVEN ARTICLE, (using novelty yarn) | \$10 | \$5 |
| 6070. KNITTED SWEATER..... | \$10 | \$5 |
| 6075. KNITTED ARTICLES (items not found in other classes) | \$10 | \$5 |
| 6076. KNITTED ARTICLES (using novelty yarn).... | \$10 | \$5 |
| 6080. OTHER TECHNIQUES | \$10 | \$5 |
| 6090. SMALL ARTICLES, (mittens, hats, etc.)..... | \$5 | \$3 |
| 6095. SOCKS..... | \$5 | \$3 |
| 6100. BABY CLOTHES – up to 3 pieces | \$5 | \$3 |

USE OF FLEECE OR FELTED WOOL

Please include fiber content on a 3 x 5 inch index card.

| Class | 1st | 2nd |
|--|------|-----|
| 6110. NON-WOVEN FELTED ARTICLE – FLAT..... | \$10 | \$5 |
| 6115. NON-WOVEN FELTED ARTICLE – 3-D..... | \$10 | \$5 |
| 6120. WADMAL ARTICLE | \$10 | \$5 |
| 6125. NUNO FELTING | \$10 | \$5 |
| 6130. OTHER..... | \$10 | \$5 |

Please read [The Washington State Fair Departmental Exhibitors Rules and Regulations \(link on page 4\)](#) and the [Home Arts General Rules on pgs. 6-7](#). Exhibitors must adhere to the general rules and the specific rules below.

Entry and Release dates on page 5 and Calendar on page 2.

DIVISION 115 – BASKETRY

ADDITIONAL AWARDS:

Grand Champion – \$100

Reserve Grand Champion – \$25

(A minimum of three exhibitors is required for granting this award. See page 6 “AWARDS”)

COILED AND KNOTTED

| Class | | 1st | 2nd |
|-------|------------------|------|-----|
| 6140. | FUNCTIONAL | \$10 | \$5 |
| 6145. | FREE FORM | \$10 | \$5 |
| 6155. | OTHER..... | \$10 | \$5 |

TWINED

| Class | | 1st | 2nd |
|-------|----------------------------------|------|-----|
| 6160. | FUNCTIONAL | \$10 | \$5 |
| 6165. | FREE FORM | \$10 | \$5 |
| 6170. | MINIATURE, 4" x 4" x 4" max..... | \$10 | \$5 |
| 6175. | OTHER..... | \$10 | \$5 |

WOVEN – SPLINTWORK AND PLAITING

| Class | | 1st | 2nd |
|-------|----------------------------------|------|-----|
| 6180. | FUNCTIONAL | \$10 | \$5 |
| 6185. | FREE FORM | \$10 | \$5 |
| 6190. | MINIATURE, 4" x 4" x 4" max..... | \$10 | \$5 |
| 6195. | OTHER..... | \$10 | \$5 |

RIB STYLE AND WICKER WORK

| Class | | 1st | 2nd |
|-------|------------------|------|-----|
| 6200. | FUNCTIONAL | \$10 | \$5 |
| 6215. | OTHER..... | \$10 | \$5 |

MISCELLANEOUS VESSELS

(e.g., Folded, Looped, Gourds incorporating Basketry Techniques)

| Class | | 1st | 2nd |
|-------|------------------|------|-----|
| 6220. | FUNCTIONAL | \$10 | \$5 |
| 6225. | FREE FORM | \$10 | \$5 |
| 6235. | OTHER..... | \$10 | \$5 |

DIVISION 116 – PROFESSIONAL / MASTER BASKET MAKER

Five classes are offered for professional/master basket makers. They will compete ONLY with one another and not with participants of amateur status. See rule 7 on page 6 for the definition of a professional. A master basket maker is one who has won an amateur division once, been a recipient of ribbons at a national basketry show or served as a Washington State Fair basketry judge.

ADDITIONAL AWARDS:

Grand Champion – \$100

Reserve Grand Champion – \$25

(A minimum of three exhibitors is required for granting this award – see page 6, “AWARDS”.)

| Class | | 1st | 2nd |
|-------|---|------|-----|
| 6300. | COILED AND KNOTTED..... | \$10 | \$5 |
| 6305. | TWINED | \$10 | \$5 |
| 6310. | WOVEN – splint work and plaiting | \$10 | \$5 |
| 6315. | RIB STYLE AND WICKER WORK..... | \$10 | \$5 |
| 6320. | MISCELLANEOUS VESSELS (e.g., folded, looped, gourds incorporating basketry techniques)..... | \$10 | \$5 |

PLEASE NOTE:

Please see separate **HOME ARTS - FOODS PREMIUM LIST** for **Preserved Foods**, **Culinary Arts** and **Table Setting** entry information.

Click here:

[COMPETITIVE EXHIBIT ENTRIES](#)