

FINE ART SHOW

PREMIUM LIST

DIRECTOR IN CHARGE

Candace Blancher

SUPERINTENDENT

Debbie Yoder

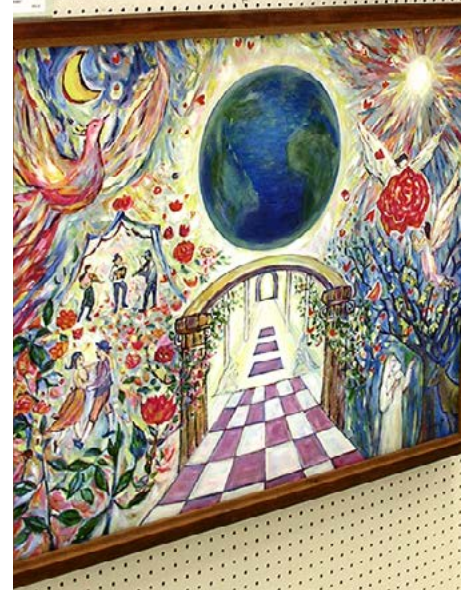
COMPETITIVE EXHIBITS OFFICE

Washington State Fair

Hours: Mon.–Fri., 8 am – 4:30 pm

Phone: (253) 841-5074

Email: CompExhibits@thefair.com



WASHINGTON STATE FAIR
AUG. 31 – SEPT 23, 2018
(CLOSED TUESDAYS & SEPT. 5)

110 9th Avenue SW, Puyallup WA 98371-6811
24-Hour Hotline: 253-841-5045 | THEFAIR.COM

2018 FINE ART SHOW CALENDAR

Online Entry Registration begins
MONDAY, APRIL 23, 2018

SUN	MON	TUE	WED	THU	FRI	SAT
					JUL. 27	JUL. 28
					ONLINE ENTRY REGISTRATION DUE by 10pm	
JUL. 29	JUL. 30	JUL. 31	AUG. 1	AUG. 2	AUG. 3	AUG. 4
		BRING IN ENTRIES 10am-4pm	BRING IN ENTRIES 10am-4pm	BRING IN ENTRIES 2pm-8pm		
AUG. 5	AUG. 6	AUG. 7	AUG. 8	AUG. 9	AUG. 10	AUG. 11
AUG. 12	AUG. 13	AUG. 14	AUG. 15	AUG. 16	AUG. 17	AUG. 18
					<i>Release of all NON-ACCEPTED entries, 10am-4pm</i>	<i>Release of all NON-ACCEPTED entries, 9am-3pm</i>
AUG. 19	AUG. 20	AUG. 21	AUG. 22	AUG. 23	AUG. 24	AUG. 25
AUG. 26	AUG. 27	AUG. 28	AUG. 29	AUG. 30	AUG. 31	SEPT. 1
					OPENING DAY OF FAIR	
SEPT. 2	SEPT. 3	SEPT. 4	SEPT. 5	SEPT. 6	SEPT. 7	SEPT. 8
		FAIR CLOSED	FAIR CLOSED			
SEPT. 9	SEPT. 10	SEPT. 11	SEPT. 12	SEPT. 13	SEPT. 14	SEPT. 15
		FAIR CLOSED				
SEPT. 16	SEPT. 17	SEPT. 18	SEPT. 19	SEPT. 20	SEPT. 21	SEPT. 22
		FAIR CLOSED				
SEPT. 23	SEPT. 24	SEPT. 25	SEPT. 26	SEPT. 27	SEPT. 28	SEPT. 29
LAST DAY OF FAIR		<i>Release of all ACCEPTED entries, 9am-8pm</i>	<i>Release of all ACCEPTED entries, 9am-6pm</i>			

Washington STATE FAIR

DO THE PUYALLUP!

AUG. 31 – SEPT. 23, 2018

(CLOSED TUESDAYS & SEPT. 5)

By submitting an entry into The Fair, exhibitors agree to abide by all rules, regulations and entry requirements of the Fair and of the department(s) to which they are submitting their entries. **It is important that exhibitors read and be familiar with the rules in this book, as well as:**

[Washington State Fair Departmental Exhibitors Rules and Regulations](#)

Vehicle Unloading Procedures:

[Vehicle Unloading Procedures](#)

Washington State Fair map:

[Washington State Fair map](#)

*You may not find it necessary to print this entire Premium List. While we ask that you **read and be familiar with** the information in the Premium List prior to entry, please feel free to print just the **pages you need**.*

Online Entry Registration Instructions

Read below, then register entry information online before bringing items to Fair.

www.thefair.com

- Read the complete rules, department and division descriptions, and entry information in this Prospectus **BEFORE** going to online entry registration.
- Then, go to the Fair's **[ONLINE ENTRY REGISTRATION](#)** page (**available starting April 23**).
- Click **Login/Logoff** and choose your **Type: Exhibitor**
 - Register using your First Name and Last Name and create a password (*write your password down or make sure it is something you will remember for future use.*) Fill in requested information, including email address. Click **Continue**.
- Click **Create Entries**. For each entry:
 - Select a **Department** ex.: *Fine Art*
 - Select a **Division** ex.: *Mixed Media - Division 304*
 - Select a **Class** ex.: *class 01 - Mixed Media, piece #1*
Fill in all requested information for the class(es) you are entering:
ex.: **Title:** *Serenity in the Rain*
Description: *'yellow flowers in pond', or 'old man in blue shirt'*
PLEASE, if your artwork consists of multiple pieces to be judged as one entry (such as triptychs or sets) indicate number of pieces in the description!
- When you have completed entering all your information, click **Continue** and follow the instructions to check out.
- Fill in "yes" at the statement to agree to all the terms and conditions of entry as defined in this prospectus.
- Click Submit.
- Please print and bring a copy of your online entry summary/receipt **with your artwork** when you bring them to the the Fair.
- For questions regarding online entry registration, contact: 253-841-5074, CompExhibits@thefair.com

Washington State Fair

FINE ART SHOW

Aug. 31 - Sept. 23, 2018
(closed Tuesdays & Sept. 5)

ATTENTION – NEW CHANGES

Artist: We recommend that you review the entire Prospectus before registering your artwork, and suggest printing a copy for your records to reference dates and print the Agreement for Entry/Sales.

Please note - during online registration when you are asked for a **"Description"** of your artwork we are asking for a brief description of the image itself such as "Portrait of old man in blue shirt". These descriptions are used to identify your specific work during handling and hanging. For Digital Art only, this is not where you describe your process or techniques and programs that were used to create your image. You are asked to submit a separate paper detailing that information when you bring in your artwork for entry.

When asked for your **"Medium,"** please tell us what actual mediums (oil, watercolor, ink, pencil, pen, etc) you used to create your piece – not the Division you entered. For Mixed Media entries our judges need to know the top two or more mediums you used, to assist in their evaluation of your work.

REGISTER ONLINE FIRST

April 23 - July 27

Online registration must be completed and paid for by July 27.

See step-by-step instructions on page 3.

THEN BRING YOUR ARTWORK ON RECEIVING DAYS:

Tuesday, July 31, 10 am – 4 pm

Wednesday, Aug. 1, 10 am – 4 pm

Thursday, Aug. 2, 2 – 8 pm

NO RECEIVING ON FRIDAY, AUG. 3RD

ALL CONDITIONS OF ELIGIBILITY, DIVISIONS, and INSTRUCTIONS must be followed to ensure your ENTRIES can be accepted for judging.

FOR ENTRY

Artists must be at least **18 years old**. Artwork for entry must be delivered to and picked up from the second floor of the Pavilion at the Washington State Fair. Walk-in entrance is through the Gold Gate. Free parking is available in the Gold

Parking Lot. Drive-in entry is available through the Gold Gate for heavy, oversized items. Only limited parking is available on the grounds and is restricted to a maximum of one hour. Vehicles entering the grounds may be subject to inspection. Please mark your calendar with the "Release" dates below. Artwork that is left after specified pick-up dates will require special arrangements with the Fair for pick up during normal business hours only.

RELEASE DATES

NON-ACCEPTED RETURNS:

Friday, Aug. 17, 10 am – 4 pm

Saturday, Aug. 18, 9 am – 3 pm

ACCEPTED RETURNS

Tuesday, Sept. 25, 9 am – 8 pm

Wednesday, Sept. 26, 9 am – 6 pm

ELIGIBILITY

- **Original artwork only.** No print reproductions, including Giclee, except as defined in our Mixed Media and Digital Art divisions. Copies made from published sources, copyrighted materials, or non-original photographs will be cause for removal from the show and forfeiture of any awards. Work done under specific instructor guidance cannot be accepted.
- **Any display units that accompany a piece of art work will be sold with the art work at the time of sale! This includes easels, stands, blocks, or any other type of display unit that is not the property of the Fair.**
- **Should questions arise concerning the eligibility of an entry, the Fair's decision will be respected as final. The Fair assumes no liability for breaches of copyright by exhibitor.**
- **This is a juried show.** Available gallery space limits the number of artwork pieces that can be accepted.
- Judges are selected from professionals or highly accredited amateur artists working within their field of expertise. Neither paid Fair employees nor volunteers are eligible to judge in the department for which they work. Paid Fair employees or volunteers who judge any show or contest outside the department they work for must be pre-approved by their department supervisor. Fair exhibitors, including exhibiting employees, are not eligible to judge in their entry divisions.

DIVISIONS

WATERCOLOR – DIVISION 301

All watercolor entries must be under glass or plexiglass, matted and framed. Watercolors, Acrylics, Sumi-e and Gouache entries must be presented in a traditional watercolor technique. Giclee or print reproductions are not accepted.

OILS / ACRYLIC– DIVISION 302

Oils or Acrylics. All Oils must be completely dry for entry. All Acrylic entries must be done in oil technique. Giclee or print reproductions are not accepted.

DRAWING – DIVISION 303

All Drawing entries must be under glass or plexiglass, matted and framed. Pen/ink, Pencils, Charcoal, Pastels, etc. Giclee or print reproductions are not accepted

MIXED MEDIA – DIVISION 304

A form of visual art in two-dimensions or three dimensions that integrates two or more mediums in the structure and design of the finished artwork. For example: Traditional Collage, Montage, Shadowbox Construction, etc. Other acceptable Mixed Media works include: One-of-a-kind Original Prints, such as Mono print, Etching reduction printing, Lithographs and Batik. No photo copies. Example of materials that could be used include: various Paper, Metals, Wood, Wax, Silk and other fabrics, Watercolor, Inks, Paints, etc. All Mixed Media artwork must be properly framed or suitable for display and encased assemblages must be ready to hang. All entries must have an attached list of all mediums used on the back of the artwork for entry or judging and award consideration. No Giclee accepted.

SCULPTURE – DIVISION 305

Three-dimensional artwork. No unfired clay can be accepted. Artists will be responsible for all handling of heavier pieces. Prior approval must be obtained for entry of extra heavy or very large pieces of sculpture (as an example, a piece that requires more than two adults to lift, move or handle). Any sculpture more appropriate for the Hobby Hall Department will not be accepted. Please contact the entry office at 253-841-5074 for additional information.

NO SCULPTURE IS ELIGIBLE FOR LATE PICK-UP, DUE TO LIMITED STORAGE SPACE.

DIGITAL ART – DIVISION 306

Two-dimensional art **created** partially or totally through the **use of a computer**. Components such as **photos, graphics, etc., must be the original work of the submitting artist**. Eligible artwork may include **original drawings or your own photographs that are artistically altered by computer manipulations**. **ALL ENTRIES MUST INCLUDE A BRIEF DESCRIPTION-STEP BY STEP OF THE CREATIVE PROCESSING OF GENERAL TECHNIQUES AND PROGRAMS UTILIZED (EXCEPT FOR MINIATURES)**. Include printing process and/or hand applied enhancements. Do not attach your description to your artwork, it must be turned in at the entry table. **For purpose of judging and award consideration, your work will not be entered or judged without this information.**

MINIATURE – DIVISION 307

All mediums accepted in the above divisions. MAXIMUM SIZE 35 SQUARE INCHES USING **OUTSIDE** FRAME MEASUREMENT. Miniatures must have hangers. **All miniatures must be for sale. No pieces priced over \$200 will be accepted.**

2018 SPECIAL COMPETITION: “OWLS - THE SILENT HUNTERS”

Let's give a hoot and celebrate the wonder of owls, which is the centerpiece of this year's competition. It has been widely accepted that **216 species of owls exist today**, and of the 216 species, 18 belong to the Barn Owl family and 198 belong to the typical owl family. Size ranging from the worlds smallest, the Least Pygmy Owl (no more than 4.5 inches in height) to the largest of known owls, the Eurasian Eagle Owl. The female stands 28 inches with a wingspan of over 6 feet. As owls are among the most popular of birds, this competition is about creating your vision in capturing the moment of one or more owls displayed in your original artwork. You may choose any of these stunning silent hunters throughout the world.

ALL DIVISIONS ARE ELIGIBLE EXCEPT MINIATURES.

Your entry must first be submitted in one of our regular Divisions. It will count as one of the two entries allowed. Only one submission per artist is allowed for this Special Competition. Selection of the winner for this competition will be made after the regular show judging has been completed.

The winner of this competition will receive an award of \$250.

INSTRUCTIONS

1. [See step-by-step online entry registration instructions on page 3.](#) Fill out registration forms and pay online by July 27. Bring a copy of your printed online registration summary/receipt with your items on receiving days.
2. Each artist may **enter two (2) pieces of art** in each division.
3. **Entry fee: \$5.50 per piece in all divisions except miniatures. Fee for miniatures is \$2.75 per piece. Entry fees are non-refundable.**
4. Minimum outside frame dimensions (except Miniatures) is 11" x 14". Maximum frame size is 5' x 6'. Maximum size for miniatures are 35 square inches using **outside** of frame dimensions.
5. **All pictures must be properly framed, dry and ready to hang.** For hanging use adequate, **weight-bearing, woven picture wire ONLY.** Wire should be anchored to frame sides 1/3 down from top of frame. No clamp plastic, glass frames or "poster frames." Metal frames must have wires. Saw-tooth hangers are acceptable on miniatures only if wire is not possible. **"Gallery Wrapped"** canvases must have painted edges that are either a continuation of the front painting or a solid color. **Solid white edges are not acceptable.** The artwork must appear free of visible nails and/or staples.
6. **All frames will be thoroughly inspected upon submission. A minimum charge of up to \$5 per piece will be made for minor alterations. An entry may be rejected until proper adjustments are made by the artist and piece may be resubmitted before close of receiving on Thursday, Aug. 2. Be sure your artwork meets show requirements; entry fees are non-refundable.**
7. Watercolors, pastels, drawings, and prints including computer prints must be under glass or plexiglas. Entries must be framed under glass or plexiglas except canvas work. Because of weight, plexiglas is preferred for larger frames. Paintings must be handled and moved several times during preparation and tear down of the show, therefore only very sturdy metal or wood frames holding glass can be accepted. A signed damage waiver may be required at time of entry for large frames with glass that requires special handling.
8. **Art must have been created since 2015 and not have been previously accepted in this show.**
9. Please place a label on lower left back of framed artwork or underside of sculptures, showing artist name and title of work.
10. Award winners will be notified by mail prior to The Fair start date.

TOTAL AWARDS OVER: \$4300

Best of Show	\$400
First Place (each division).....	\$250
Second Place (each division).....	\$150
Third Place (each division).....	\$75
Fourth Place (each division)	\$50
Honorable Mention (six each division)	Ribbon
First Place (miniature only)	\$75
Second Place (miniature only)	\$50
Third Place (miniature only)	\$35
Fourth Place (miniature only)	\$25
Honorable Mention (ten - miniature only)	Ribbon
People's Choice Main Show (one per day)	\$10
People's Choice Miniatures (one per day).....	\$10
Directors' Purchase Award	Price of artwork
Special Competition: "Owls - The Silent Hunters"	\$250

CONDITIONS

Our show is a competitive art event with an opportunity for artists to display and sell their accepted work. While we would prefer all work be for sale, we accept Not For Sale (NFS) work on a limited basis – also see Second Show, below. Judging is not affected by sales status.

1. **Every Fine Art Show entry must be accompanied by a signed [Agreement for Entry/Sale of Artwork](#) (on page 8 of this document.)**
2. **A 25% commission will be charged on all sold artwork.**
3. No changes can be made to either the for sale status or the price of an entry after it is judged. To maintain the integrity of the show, no paintings can be removed until published release dates (see page 2).
4. Although every precaution will be made to safeguard the artwork, the Washington State Fair will not be responsible for theft, damage (including glass breakage) or loss of entries. Each artist acknowledges that their artwork will be displayed in public and there is no guarantee or assurances of any kind for the protection of the artwork.
5. **The Fair reserves the right to not accept artwork or remove any artwork from display at any time, for any reason and at their own discretion.**
6. Entries cannot be accepted or returned by mail or common carrier.
7. Unsold artwork left beyond the accepted return dates without prior special arrangements with The Fair will become the property of The Fair.
8. Multiple pieces entered as a set are to be judged, hung and sold as a set-no exceptions. Due to limited space, up to **three** multiple image pieces are allowed **Each piece must be a minimum 11" x 14" with total dimensions not to exceed a 5'x 6' space.**

SECOND SHOW

In order to provide the opportunity for additional artists' work to be displayed, up to 50 juried paintings may be randomly selected and held back for a Second Show. **Second Show does not mean "second best"**. Selected paintings (including miniatures) which are sold during the first 10 days of the Fair (but not award winners) **and selected Not For Sale (NFS) paintings as necessary**, will be replaced by these paintings on Sept. 11.

AWARDS PRESENTATIONS AND PREVIEW EVENT

This event is held **by invitation only**. Only award winners, their guest, and those who have received a written invitation should attend.

This prospectus may be reproduced for entry purposes.

FOR MORE INFORMATION:

Washington State Fair, Competitive Exhibits Office
253-841-5074
or E-mail: CompExhibits@thefair.com

Washington STATE FAIR

DO THE PUYALLUP!

AUG. 31 - SEPT. 23, 2018
(CLOSED TUESDAYS AND SEPT. 5)

For additional **WASHINGTON STATE FAIR** information,
driving directions, concert lineup, etc.:
Website: www.thefair.com
24-Hr. Hotline: 253-841-5045

AGREEMENT FOR ENTRY / SALE OF ARTWORK

The undersigned agrees to all of the Prospectus Entry and Eligibility provisions and to the following:

Section 1: Title of the artwork is: _____

Section 2: Medium: _____

Section 3: Artist agrees that the price of the artwork offered for sale will be \$ _____, which shall be the minimum price acceptable to artist.

Section 4: Commission. If the artwork is sold, Artist agrees to pay the Fair a commission equal to twenty-five percent (25%) of the sale price of the artwork.

Section 5: Display. The Fair shall be permitted to display the artwork entered.

Section 6: Notice to viewers. The Fair agrees to notify viewers that the artwork is Artist's work.

Section 7: Payment of proceeds. The proceeds from the sale of the artwork shall be paid to Artist within thirty (30) days of close of Fair.

Section 8: Governing Law. This Agreement shall be governed according to the laws of the state of Washington. In the event that legal action is undertaken to enforce or interpret any portion of this Agreement, the parties agree that venue shall lie in Pierce County, Washington.

Section 9: Although every precaution will be made to safeguard the artwork, the Fair will not be responsible for theft, damage (including glass breakage) or loss of entries. Each artist acknowledges that selected artwork will be displayed in public and there is no guarantee or assurance of any kind for the protection of the artwork.

Dated this _____ day of _____, 2018.

Artist Signature (18yrs or older): _____

Print Name: _____

Fair Associate: _____

AGREEMENT FOR ENTRY / SALE OF ARTWORK

The undersigned agrees to all of the Prospectus Entry and Eligibility provisions and to the following:

Section 1: Title of the artwork is: _____

Section 2: Medium: _____

Section 3: Artist agrees that the price of the artwork offered for sale will be \$ _____, which shall be the minimum price acceptable to artist.

Section 4: Commission. If the artwork is sold, Artist agrees to pay the Fair a commission equal to twenty-five percent (25%) of the sale price of the artwork.

Section 5: Display. The Fair shall be permitted to display the artwork entered.

Section 6: Notice to viewers. The Fair agrees to notify viewers that the artwork is Artist's work.

Section 7: Payment of proceeds. The proceeds from the sale of the artwork shall be paid to Artist within thirty (30) days of close of Fair.

Section 8: Governing Law. This Agreement shall be governed according to the laws of the state of Washington. In the event that legal action is undertaken to enforce or interpret any portion of this Agreement, the parties agree that venue shall lie in Pierce County, Washington.

Section 9: Although every precaution will be made to safeguard the artwork, the Fair will not be responsible for theft, damage (including glass breakage) or loss of entries. Each artist acknowledges that selected artwork will be displayed in public and there is no guarantee or assurance of any kind for the protection of the artwork.

Dated this _____ day of _____, 2018.

Artist Signature (18yrs or older): _____

Print Name: _____

Fair Associate: _____