

HOME ARTS TEXTILES PREMIUM LIST

DIRECTOR IN CHARGE

Candace Blancher

SUPERINTENDENT

Nancy Dekeyser

CONTEST COORDINATOR

Sue Horton

ENTRIES COORDINATOR

Sharon Wischmeier

TEXTILE DEMONSTRATION COORDINATOR

Kathy Brooks

HOME ARTS OFFICE

(253) 841-5063

Beginning July. 31, 9 am – 12 pm,
and Fairtime during building hours

COMPETITIVE EXHIBITS OFFICE

Washington State Fair

Hours: Mon.–Fri., 8 am – 4:30 pm

Phone: (253) 841-5074

Email: CompExhibits@thefair.com

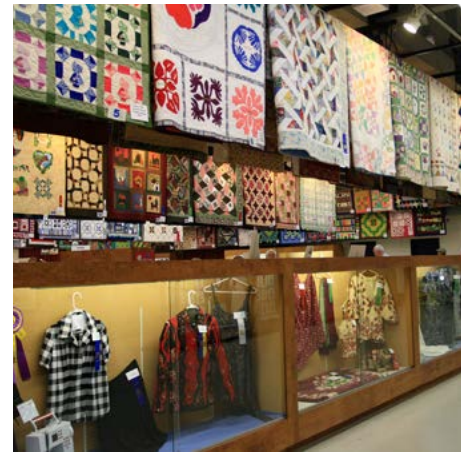
WASHINGTON STATE FAIR

SEPTEMBER 1-24, 2017

(CLOSED TUESDAYS & WED. SEPT. 6)

110 9th Avenue SW, Puyallup WA 98371-6811

24-Hour Hotline: 253-841-5045 | THEFAIR.COM



2017 HOME ARTS CALENDAR

SUN	MON	TUE	WED	THU	FRI	SAT
<div style="border: 1px solid black; padding: 5px; width: fit-content; margin: auto;"> Online Entry Registration Due for Table Setting by 10 pm on WEDNESDAY, JULY 26, 2017 </div>						
AUG. 6	AUG. 7	AUG. 8	AUG. 9	AUG. 10	AUG. 11	AUG. 12
	Online Entry Registration Due by 10pm for Quilt Challenge					
AUG. 13	AUG. 14	AUG. 15	AUG. 16	AUG. 17	AUG. 18	AUG. 19
			Online Entry Registration Due by 10pm for Textiles & Preserved Foods		BRING ENTRIES for Textiles & Preserved Foods 9am-4pm	BRING ENTRIES for Textiles & Preserved Foods 9am-4pm
AUG. 20	AUG. 21	AUG. 22	AUG. 23	AUG. 24	AUG. 25	AUG. 26
BRING ENTRIES for Textiles & Preserved Foods 12pm-6pm				Online Entry Registration Due by 10pm for Culinary Arts		
AUG. 27	AUG. 28	AUG. 29	AUG. 30	AUG. 31	SEPT. 1	SEPT. 2
		BRING ENTRIES for Culinary Arts & Table Setting, 11am-6pm			OPENING DAY OF FAIR	
SEPT. 3	SEPT. 4	SEPT. 5	SEPT. 6	SEPT. 7	SEPT. 8	SEPT. 9
		FAIR CLOSED	FAIR CLOSED Online Entry Registration Due by 10pm for Salsa Showdown	BRING ENTRIES for Salsa Showdown 5pm-7pm Online Entry Registration Due by 10pm for C&H Sugar Parent-Child Cookie Contest	Online Entry Registration Due by 10pm for Brown & Haley ROCA & Mountain Baking Adult Contest	BRING ENTRIES for C&H Sugar Parent-Child Cookie Contest 10am-12pm
SEPT. 10	SEPT. 11	SEPT. 12	SEPT. 13	SEPT. 14	SEPT. 15	SEPT. 16
Online Entry Registration Due by 10pm for Fastest Fingers in the West	• Fastest Fingers in the West Contests • Brown & Haley Adult Contest 4:30pm-6:30pm Online Entry Registration Due by 10pm for Chili Challenge	FAIR CLOSED	BRING ENTRIES for Chili Challenge 5pm-7pm Online Entry Registration Due by 10pm for The Great American Spam Championship	Online Entry Registration Due by 10pm for Brown & Haley Parent-Child Contest	BRING ENTRIES for Great American Spam Contest 10:30am-12pm	Online Entry Registration Due by 10pm for Berry Pie Contest • Brown & Haley Parent-Child Contest 10am-12pm
SEPT. 17	SEPT. 18	SEPT. 19	SEPT. 20	SEPT. 21	SEPT. 22	SEPT. 23
	Online Entry Registration Due by 10pm for Original Famous Fair Scone Contest BRING ENTRIES for Berry Pie Contest 10:30am-12pm	FAIR CLOSED	Online Entry Registration Due by 10pm for Best Jam & Jelly Contest BRING ENTRIES for Original Famous Fair Scone Contest 10:30am-12pm		BRING ENTRIES for Best Jam and Jelly Contest 10:30am-12pm	
SEPT. 24	SEPT. 25	SEPT. 26	SEPT. 27			
LAST DAY OF FAIR		Release of all entries and exhibitors may pick up ribbons, 9am-8pm	Release of all entries and exhibitors may pick up ribbons, 9am-6pm			

CONTENTS

2017 CALENDAR	2
Links to important Fair Information	4
Online Entry Registration Instructions.....	4
Entry & Release Schedules	
Also, See Calendar on Page 2.....	5
Home Arts Information and General Rules	6
Clothing - Division 100	8
Creative Stitchery - Division 101	9
Professional / Master Creative Stitchery - Division 117	10
Needlepoint – Division 102.....	10
Crochet – Division 103	11
Knitting – Division 104	12
Washington State Fair Fastest Fingers in the West Contest – Division 105.....	13
Large Quilts – Division 106	14
Amateur / Professional Quilt Collaboration – Division 107.....	15
Professional / Master Quilters – Division 108	15
Small Quilts – Division 109	16
Quilt Challenge – Division 110	17
Rugs – Division 111.....	17
Lace / Open Work – Division 112.....	18
Weaving – Division 113.....	19
Spinning – Division 114.....	20
Basketry – Division 115	21
Professional / Master Basket Maker – Division 116	21

PLEASE NOTE:

Please see separate
HOME ARTS - FOODS PREMIUM LIST
for **Preserved Foods, Culinary Arts**
and **Table Setting** entry information.

Click here:

[COMPETITIVE EXHIBIT ENTRIES](#)

Washington STATE FAIR

DO THE PUYALLUP!

SEPTEMBER 1-24, 2017
(CLOSED TUESDAYS & SEPT. 6)

By submitting an entry into the Fair, exhibitors agree to abide by all rules, regulations and entry requirements of the Fair and of the department(s) to which they are submitting their entries. **It is important that exhibitors read and be familiar with the rules in this book, as well as:**

[Washington State Fair Departmental Exhibitors Rules and Regulations](#)

Vehicle Unloading Procedures:

[Vehicle Unloading Procedures](#)

Washington State Fair map:

[Washington State Fair map](#)

You may not find it necessary to print this entire Premium List. While we ask that you **read and be familiar with the information in the Premium List prior to entry, please feel free to print just the pages you need.**

Online Entry Registration Instructions

Read below, then register entry information online before bringing items to Fair.

www.thefair.com

- Read the complete rules, department and division descriptions, and entry information in this Premium List **BEFORE** going to Online Entry Registration.
- Then go to the [ONLINE ENTRY REGISTRATION](#) page (*available starting in May*)
- Click **Register** or **Sign In**
 - Register using your First Name and Last Name and create a password (*write your password down or make sure it is something you will remember for future use.*) Fill in requested information, including email address. Click **Continue**.
 - Select **Department** ex.: *Home Arts - Textiles*
 - Select a **Division** ex.: *Clothing, Division 100*
 - Select a **Class** ex.: *class 1032 - Costume*
 - Fill in all requested information for the class(es) you are entering, including a brief **Description** (*such as color, pattern, special material*)
- When all your information is complete, click **Add Entry to Cart** and follow instructions to check out. *There are NO ENTRY FEES in any of the Home Arts Divisions.*
(NOTE: If you think you may want to modify your entries, you may *save* your current session and *check out at a later session.* Be sure to **Check Out before the closing date listed for your classes; entries are not submitted to the Fair office until the check out process is complete.)**
- Fill in "**yes**" at the statement to agree to all the terms and conditions of entry as defined in this Premium List.
- Click **Submit**.
- Please print and bring a copy of your online entry summary/receipt **with your entries** when you bring them to the Fair.
- Please contact us with any questions regarding online entry registration:
253-841-5074, CompExhibits@thefair.com

ENTRY & RELEASE SCHEDULES

Also, See Calendar on Page 2

ENTRY & RELEASE REGULAR SCHEDULE

Classes in the following divisions fall under the regular schedule of dates and times listed below for **Online Entry Registration, Bringing In Entry Items** and **Entry Release/Return**.

Div. 100 - Clothing.....	pg. 8
Div. 101 - Creative Stitchery.....	pg. 9
Div. 117 - Professional / Master Creative Stitchery....	pg. 10
Div. 102 - Needlepoint.....	pg. 10
Div. 103 - Crochet	pg. 11
Div. 104 - Knitting	pg. 12
Div. 106 - Large Quilts	pg. 14
Div. 107 - Amateur / Professional Quilt	pg. 15
Div. 108 - Professional / Master Quilters	pg. 15
Div. 109 - Small Quilts	pg. 16
Div. 111 - Rugs	pg. 17
Div. 112 - Lace / Open Work	pg. 18
Div. 113 - Weaving	pg. 19
Div. 114 - Spinning	pg. 20
Div. 115 - Basketry.....	pg. 21
Div. 116 - Professional / Master Basket Maker.....	pg. 21

ONLINE ENTRY REGISTRATION

Online entry registration must be completed by deadlines listed. Print a copy of your on-line entry summary/receipt to bring with your items. See Online Entry Registration instructions on page 4.

TEXTILES & FIBER ARTS DIVISIONS:

Wed., August 16, 2017, by 10 pm

BRINGING IN ENTRY ITEMS

Please bring a copy of your online entry summary/receipt with your item(s). **MAIL-IN ENTRIES WILL NOT BE ACCEPTED.**

TEXTILES & FIBER ARTS DIVISIONS

Fri., August 18, 2017, 9 am – 4 pm

Sat., August 19, 2017, 9 am – 4 pm

Sun., August 20, 2017, 12 pm – 6 pm

ENTRY RELEASE/RETURN

ALL ENTRIES WILL BE RELEASED:

Tue., September 26, 9 am – 8 pm

Wed., September 27, 9 am – 6 pm

UNCLAIMED ITEMS WILL NOT BE STORED. ANYTHING REMAINING AFTER WEDNESDAY, SEPT. 27 WILL BE DONATED TO CHARITY OR DISCARDED.

ENTRY & RELEASE FOR SPECIAL CONTESTS

For certain classes and special contests, dates and times vary from the regular schedule above; these variations are noted in the class/contest information. **Please read the information carefully to be sure of the date and time for the contests you wish to enter.**

The following contests have dates or times that deviate from the Regular Schedule. See contest information for details:

Div. 105 – Washington State Fair	
Fastest Fingers in the West.....	pg. 13
Div. 110 – Quilt Challenge.....	pg. 17

HOME ARTS INFORMATION AND GENERAL RULES

WAYS TO PARTICIPATE

The Home Arts Department offers an opportunity for craft persons throughout the Puget Sound area and beyond to share the pleasure of their craft.

HANDCRAFTED ENTRIES

- **Textiles and Fiber Arts ***
- **Preserved Foods ***
- **Culinary Arts ***
- **Special Contests ***

**See separate Home Arts - Foods Premium List*

The pride of creating something beautiful and/or delicious and then submitting it for competition is worthy of celebration, regardless of whether the entry wins an award. The competition serves to increase participants' skill levels and heighten the appreciation and interest of the general public.

**There are NO ENTRY FEES
in any of the Home Arts Divisions.**

DEMONSTRATIONS

- **Textiles and Fiber Arts**
- **Culinary Arts**

Many talented artists will be sharing knowledge by way of demonstrations every day between 10:30 am – 9:00 pm. To volunteer, call the Competitive Exhibits Office: (253) 841-5074.

AWARDS

Each division with at least three exhibitors will have a purple and gold Grand Champion rosette and prize awarded to the most outstanding entry of that division. A lavender and white Reserve Champion rosette will also be given in each qualifying division. There may be one Blue, one Red and one White ribbon given in each class. Honorable Mention ribbons may be awarded. Only Purple, Lavender, Blue, Red and Award of Merit ribbons will receive money or prize premiums. Premium checks will be mailed in November.

ABSOLUTELY NO INFORMATION ON PLACINGS OR AWARDS WILL BE ANNOUNCED PRIOR TO FAIR'S OPENING.

DISPLAYS

All award-winning entries will be displayed, and every effort will be made to display all other entries. However, we reserve the right to withhold non-award winning entries from display. This right will be exercised ONLY if there is not sufficient space to display said entry in a safe and attractive manner. Any item not displayed will be held in a secure storage area of the Home Arts Department and the exhibitor will be notified prior to the Fair opening.

JUDGING

Judges are selected from professionals or highly accredited amateur artists working within their field of expertise. Neither paid Fair employees nor volunteers are eligible to judge in the department for which they work. Paid Fair employees or volunteers who judge any show or contest outside the department they work for must be pre-approved by their department supervisor. Fair exhibitors, including exhibiting employees, are not eligible to judge in their entry divisions.

RECEIVING AND RETURN

You may drive to the Home Arts Department through the Service Gate at 5th St SW (off 15th Ave SW) or through the Gold Gate at 9th Ave SW and Meridian St SW on entry days. Please refer to the Entry and Return Schedule on page 5 for receiving and return dates and times.

HOME ARTS ENTRIES - RULES

1. Entry registration must be made online for all Divisions by entry deadline. See page 4 for online entry step-by-step instructions and page 5 for entry schedule.
2. No entry fee will be charged.
3. All articles must be the handwork of the exhibitor. They must be finished within the last two years. No article can be exhibited a second year. NO SOILED OR OBVIOUSLY USED ITEMS WILL BE ACCEPTED.
4. ALL ITEMS WILL BE PLACED IN THE MOST SUITABLE CLASS. Each exhibitor shall be limited to ONE ENTRY PER CLASS; as to enter more would, in effect, be competing against oneself, i.e., one crocheted afghan, one crocheted pillow, etc. No pairs or sets except where specified. Entries may be reclassified by staff or judges.
5. The "OTHER" class will only be used if the item does not fit within any other class in a division.
6. All awards need not necessarily be awarded in each class at the discretion of the judge.
7. The Home Arts Department is for amateurs to compete and exhibit their work. Anyone grossing more than \$4000 per year from the sale of home arts-related products, or engaging in teaching a craft on a regular and structured class schedule, is considered a professional by The Washington State Fair and is not eligible to enter in the Home Arts Department, except for the professional/master sections in the quilting, creative stitchery, and basketry divisions. A quilt that is made by an amateur and a professional will go into the Amateur/Professional Division.

Thirteen classes are offered for professional/master quilters, five classes for professional/master creative stitchers, and five classes for professional/master basket makers. They will compete ONLY with one another, and not with participants of amateur status.

Master crafts persons are exhibitors who have won these amateur division championships once. Each division must

have at least three exhibitors competing for a Grand Championship to be awarded. See AWARDS previous page.

8. CRAFT PERSONS MUST BE AT LEAST 16 YEARS OLD,

except where noted. No separate designations or discriminations can be made. We have no provision for children's entries at this time, and feel that it is unfair to both the child and the judge to ask them to compete with adults.

Children ages 6–15 are encouraged to enter the Creative Kids Exhibit at the Spring Fair in April. You may download the Creative Kids premium list at www.thefair.com starting in February.

9. ALL ITEMS PLACED ON DISPLAY MUST REMAIN FOR THE FULL RUN OF THE FAIR. Only items not on display may be picked up before the end of the Fair.

10. The Washington State Fair assumes no responsibility for loss or damage. Every reasonable precaution will be used to protect items on display.

JUDGES' SCORE CARD

CRAFTSMANSHIP – Technical execution

40% possible. _____

DEGREE OF DIFFICULTY

20% possible. _____

DESIGN – Proportion, line, color, individuality

20% possible. _____

PRESENTATION – Finishing

20% possible. _____

TOTAL _____

CLOTHING - DIVISION 100

(Sewing)

Please read The Washington State Fair Departmental Exhibitors Rules and Regulations (see link on page 4) and the Home Arts General Rules on page 6.

Entry and release dates on page 5.

SOME THINGS JUDGES CONSIDER: Grain line, stitching, accuracy, pressing, seam finishing, grading and clipping, stains/soil, zippers and hems.

ADDITIONAL AWARDS:

Grand Champion – \$100 Gift Certificate
donated by Pacific Fabric & Crafts,
 five locations in the Greater Seattle area.

www.pacificfabrics.com



Reserve Grand Champion – \$25

CHILDREN'S WEAR

Class		1st	2nd
1000.	EVERYDAY WEAR.....	\$10	\$5
1010.	PARTY WEAR	\$10	\$5
1030.	CHRISTENING DRESS OR SET	\$10	\$5
1032.	COSTUME	\$10	\$5
1040.	OTHER.....	\$10	\$5

TAILORING

Class		1st	2nd
1050.	SUIT, MEN'S OR WOMEN'S.....	\$10	\$5
1060.	COAT, BLAZER, JACKET	\$10	\$5

SEPARATES

Class		1st	2nd
1130.	STRETCH FABRIC (swimsuit, ski wear, leotard, etc.)	\$10	\$5
1140.	JACKET	\$10	\$5
1150.	SKIRT, PANTS	\$10	\$5
1170.	BLOUSE OR SHIRT.....	\$10	\$5
1190.	DRESS, DAYTIME.....	\$10	\$5
1200.	VEST	\$10	\$5
1205.	OTHER.....	\$10	\$5

SPECIAL OCCASION

Class		1st	2nd
1210.	WEDDING DRESS	\$10	\$5
1220.	LONG PARTY DRESS.....	\$10	\$5
1230.	SHORT PARTY DRESS.....	\$10	\$5
1250.	COSTUME	\$10	\$5
1260.	OTHER.....	\$10	\$5

MISCELLANEOUS

Class		1st	2nd
1280.	NIGHTGOWN, SLIP, OTHER LINGERIE	\$10	\$5
1285.	APRON	\$10	\$5
1290.	PURSE/BAG.....	\$10	\$5
1300.	DOLL CLOTHES (doll up to 18" optional) ...	\$10	\$5
1320.	OTHER.....	\$10	\$5

SPECIAL SEWING TECHNIQUES

(Garment constructed by exhibitor, i.e.,
 no fusing or gluing on ready-made garments)

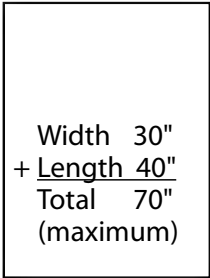
Class		1st	2nd
1400.	MANIPULATED SURFACE (e.g., pleating, woven strips)	\$10	\$5
1402.	SMOCKING	\$10	\$5
1410.	EMBELLISHMENTS (e.g., hand and free motion machine embroidery, beading.....	\$10	\$5
1420.	QUILTING TECHNIQUES, APPLIQUE, PATCHWORK.....	\$10	\$5

CREATIVE STITCHERY - DIVISION 101

Please read The Washington State Fair Departmental Exhibitors Rules and Regulations (see link on page 4) and the Home Arts General Rules on page 6.

Entry and release dates on page 5.

All pictures must have strong WIRE hangers, no string or self-leveling hangers (e.g., _/\//\//_), and must not exceed 30"



40" 70" width and length combined, including frame. See example at left. Professional mounting and framing is permissible. Frame or glass is optional. No pairs or sets will be accepted. Judging will be based on completed piece including finishing and/or framing.

SOME THINGS JUDGES CONSIDER: Consistent direction of stitches, thread compatibility to fabric, proper tension, splitting threads, hoop outlines and/or soil, on-grain framing.

ADDITIONAL AWARDS:

Grand Champion – \$100
Reserve Grand Champion – \$25

The Evergreen Chapter of the Embroiderer's Guild of America will award \$50 cash, a certificate, and a ribbon. The award will be based on originality and stitching excellence.



TRADITIONAL EMBROIDERY

Class	1st	2nd
2000. PICTURE.....	\$10	\$5
2010. SMALL ARTICLE.....	\$10	\$5
2020. MEDIUM ARTICLE.....	\$10	\$5
2030. LARGE ARTICLE.....	\$10	\$5
2040. YOUR ORIGINAL DESIGN.....	\$10	\$5

COUNTED THREAD

Class	1st	2nd
2050. PICTURE, (e.g., cross stitch) up to 24" length plus width.....	\$10	\$5
2060. PICTURE, (e.g., cross stitch) 25" to 36" length plus width.....	\$10	\$5
2070. PICTURE, (e.g., cross stitch) 37" to 48" length plus width.....	\$10	\$5
2080. PICTURE, (e.g., cross stitch) 49" to 70" length plus width.....	\$10	\$5
2090. PICTURE DONE ON LINEN, up to 24" length plus width.....	\$10	\$5
2091. PICTURE DONE ON LINEN, 25" to 36" length plus width.....	\$10	\$5
2092. PICTURE DONE ON LINEN, 37" to 48" length plus width.....	\$10	\$5
2095. PICTURE DONE ON LINEN, 49" to 70" length plus width.....	\$10	\$5
2100. CHRISTMAS STOCKING.....	\$10	\$5
2105. OTHER.....	\$10	\$5

HARDANGER

Class	1st	2nd
2111. HOUSEHOLD, up to 12" in diameter.....	\$10	\$5
2112. HOUSEHOLD, 12" to 24" in diameter.....	\$10	\$5
2113. HOUSEHOLD, larger than 24" in diameter..	\$10	\$5
2114. FRAMED.....	\$10	\$5
2115. OTHER (e.g. pulled, cut, mixed, garment, etc.).....	\$10	\$5

OTHER STITCHERY

Class	1st	2nd
2118. BUNKA.....	\$10	\$5
2120. SMOCKING.....	\$10	\$5
(For Smocked Clothing, see Class 1402)		
2140. BRAZILIAN EMBROIDERY.....	\$10	\$5
2150. SILK RIBBON EMBROIDERY.....	\$10	\$5
2160. MULTI-MEDIA.....	\$10	\$5
2170. YOUR ORIGINAL DESIGN.....	\$10	\$5
2175. MACHINE EMBROIDERY.....	\$10	\$5
2180. OTHER.....	\$10	\$5

AWARD OF MERIT

At the conclusion of the contest judges may designate up to two stitchery entries (other than the Grand and Reserve Grand Champions) for Awards of Merit – \$25 premium and a rosette.

PROFESSIONAL / MASTER CREATIVE STITCHERY - DIVISION 117

Please read The Washington State Fair Departmental Exhibitors Rules and Regulations (see link on page 4) and the Home Arts General Rules on page 6.

Entry and release dates on page 5.

Five classes are offered for professional/master creative stitcher. They will compete ONLY with one another and not with participants of amateur status. See rule 7 on page 6 for the definition of a professional.

ADDITIONAL AWARDS:

Grand Champion – \$100

Reserve Grand Champion – \$25

(A minimum of three exhibitors is required for granting this award – see page 6, "AWARDS".)

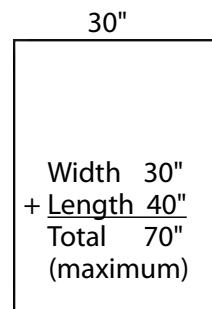
Class		1st	2nd
2200.	TRADITIONAL EMBROIDERY	\$10	\$5
2205	COUNTED THREAD (eg. cross stitch).....	\$10	\$5
2210	HARDANGER.....	\$10	\$5
2215	MACHINE EMBROIDERY	\$10	\$5
2220	OTHER STITCHERY	\$10	\$5

NEEDLEPOINT – DIVISION 102

Please read The Washington State Fair Departmental Exhibitors Rules and Regulations (see link on page 4) and the Home Arts General Rules on page 5.

Entry and release dates on page 6.

All pictures must have strong WIRE hangers, no string or self-leveling hangers (i.e. _/\/\/_), and must not exceed 70"



width and length combined, including frame. See example at left. Professional mounting and framing is permissible. Frame or glass is optional. No pairs or sets will be accepted. Judging will be based on completed piece including finishing and/or framing. No cross stitch will be accepted in this division.

SOME THINGS JUDGES CONSIDER:

Consistent direction of stitches, thread compatibility to fabric, proper tension, splitting threads, hoop outlines and/or soil, on-grain framing.

ADDITIONAL AWARDS:

Grand Champion – \$100

Reserve Grand Champion – \$25

The Evergreen Chapter of the Embroider's Guild of America will award \$50 cash, a certificate, and a ribbon. The award will be based on originality and stitching excellence.



Class		1st	2nd
2510.	PETIT POINT (Greater than 24 stitches per inch and executed entirely in tent stitch)...	\$10	\$5
2520.	PICTURE, up to 24" length plus width	\$10	\$5
2530.	PICTURE, 25" to 36" length plus width	\$10	\$5
2540.	PICTURE, 37" to 48" length plus width	\$10	\$5
2550.	PICTURE, 49" to 70" length plus width	\$10	\$5
2560.	UNFRAMED NEEDLEPOINT PIECE	\$10	\$5
2580.	PAINTED CANVAS WITH STITCH GUIDE	\$10	\$5
2590.	PAINTED CANVAS WITHOUT STITCH GUIDE..	\$10	\$5

AWARD OF MERIT

At the conclusion of the contest judges may designate up to two needlepoint entries (other than the Grand and Reserve Grand Champions) for Awards of Merit – \$25 premium and a rosette.

CROCHET – DIVISION 103

Please read The Washington State Fair Departmental Exhibitors Rules and Regulations (see link on page 4) and the Home Arts General Rules on page 6.

Entry and release dates on page 5.

Afghans not to exceed 150 inches width and length combined, but must be at least 96 inches width and length combined, except Class 3050. No framed, mounted or lined crochet work will be accepted.

***CROCHETED THREADS ARE IN DIVISION 112 ***

SOME THINGS JUDGES CONSIDER: Even stitches, even tension, blocking, even seams, cleanliness, ends, even outside edges

ADDITIONAL AWARDS:

Grand Champion – \$100 Gift Certificate
donated by Pacific Fabric & Crafts,
 five locations in the Greater Seattle area.

www.pacificfabrics.com



Reserve Grand Champion – \$25

HOUSEHOLD ITEMS, CROCHET

Class	1st	2nd
3020. AFGHAN, PIECED.....	\$15	\$10
3030. AFGHAN, TUNISIAN (Afghan) STITCH	\$15	\$10
3040. AFGHAN, ONE PIECE	\$15	\$10
3050. AFGHAN, BABY	\$10	\$5
3090. MISCELLANEOUS SMALL ITEMS.....	\$5	\$3
3100. PILLOW.....	\$5	\$3
3110. DOLL CLOTHES, 3 pieces or less (doll up to 12" optional – the judge must be able to see the inside of the clothes)	\$5	\$3
3115. BED DOLLS, Pillow type only (no stand).....	\$5	\$3
3120. OTHER.....	\$5	\$3

WEARING APPAREL, CROCHET

Class	1st	2nd
3130. DRESS, COAT, SUIT, ETC.....	\$15	\$10
3140. SWEATER, VEST	\$10	\$5
3150. CHILDREN'S WEAR.....	\$5	\$3
3160. INFANT WEAR, SINGLE PIECE	\$5	\$3
3170. INFANT WEAR, SET.....	\$10	\$5
3180. SCARF, STOLE, SHAWL.....	\$5	\$3
3190. Hat.....	\$5	\$3
3200. MISCELLANEOUS SMALL ITEMS.....	\$5	\$3
3210. OTHER.....	\$5	\$3

KNITTING – DIVISION 104

Please read The Washington State Fair Departmental Exhibitors Rules and Regulations (see link on page 4) and the Home Arts General Rules on page 6.

Entry and release dates on page 5.

Afghans not to exceed 150 inches width and length combined. Thread bedspreads not to exceed 225 inches width and length combined.

*** ENTER LACE TECHNIQUE BEDSPREADS, TABLECLOTHS AND DOILIES IN DIVISION 112 ***

SOME THINGS JUDGES CONSIDER: Even stitches, even tension, blocking, even seams, cleanliness, ends, even outside edges.

ADDITIONAL AWARDS:

Grand Champion – \$100 Gift Certificate
donated by Pacific Fabric & Crafts,
 five locations in the Greater Seattle area.

www.pacificfabrics.com



Reserve Grand Champion – \$25

HAND KNIT HOUSEHOLD ARTICLES

Class	1st	2nd
3510. AFGHAN, pieced	\$15	\$10
3520. AFGHAN, one piece	\$15	\$10
3530. BABY AFGHAN	\$10	\$5
3550. DOLL CLOTHES, 3 pieces or less (doll up to 12" optional – the judge must see the inside of the clothes)	\$5	\$3
3560. OTHER	\$5	\$3

HAND KNIT WEARING APPAREL

Class	1st	2nd
3570. DRESS, COAT, SUIT, ETC (adult)	\$15	\$10
3580. SWEATER, ADULT – CARDIGAN	\$10	\$5
3590. SWEATER, ADULT – PULLOVER	\$10	\$5
3600. VEST	\$5	\$3
3610. DRESS, COAT, SUIT, ETC (children)	\$5	\$3
3612. SWEATER, CHILDRENS – CARDIGAN	\$10	\$5
3614. SWEATER, CHILDRENS – PULLOVER	\$10	\$5
3616. CHILDREN'S WEAR, SET	\$10	\$5
3620. INFANT WEAR, SINGLE PIECE	\$5	\$3
3630. INFANT WEAR, SET	\$10	\$5
3640. SCARF	\$5	\$3
3642. FASHION YARN SCARF (boa, ruffled)	\$5	\$3
3645. STOLE, SHAWL	\$5	\$3
3650. HAT	\$5	\$3
3655. BAG	\$5	\$3
3660. SOCKS	\$5	\$3
3665. GLOVES, MITTENS	\$5	\$3
3670. OTHER	\$5	\$3
3675. USE OF A CIRCULAR KNITTING DEVICE (e.g., Knifty Knitter)	\$5	\$3

MACHINE KNITS

Class	1st	2nd
3700. AFGHAN	\$5	\$3
3705. ADULT WEAR	\$5	\$3
3720. INFANT WEAR	\$5	\$3
3728. OTHER	\$5	\$3

WASHINGTON STATE FAIR FASTEST FINGERS IN THE WEST CONTEST – DIVISION 105

Sponsored by:



Makers' Mercantile
SKACEL Collections, Inc.

These events will be held in the Home Arts Department on the 2nd floor of the Pavilion. A maximum of 30 contestants will be accepted for each competition.

Four-ply knitting worsted, size 8 knitting needles and size I crochet hook will be provided by Makers' Mercantile. The prizes are donated by Makers' Mercantile. Duplicate awards will be given for work of equal quality. Tatting shuttle and thread provided by the Washington State Fair.

Please read The Washington State Fair Departmental Exhibitors Rules and Regulations (see link on page 4) and the Home Arts General Rules on page 6.

**All three Fastest Fingers contests are on:
MONDAY, SEPTEMBER 11**

You may enter either:

Online by 10 pm the day before the contest (see page 4 for instructions), or **At the Home Arts Dept.** Up to 1/2 hour before contest time.

FASTEST FINGERS IN THE WEST

Class		1st	2nd	3rd
3736. TATTING CONTEST – 11:00 AM ...	\$30	\$20	\$10	

Class		1st	2nd	3rd
3738. KNITTING CONTEST – 1 PM	\$30	\$20	\$10	

The winners of the tatting and knitting contests will be those contestants who have knitted or tatted the greatest number of stitches with correct tension and workmanship during the 15-minute period. Any incomplete stitch or dropped stitch will be deducted from the total number of stitches completed.

Class		1st	2nd	3rd
3740. CROCHETED GRANNY SQUARE CONTEST – 3 PM	\$30	\$20	\$10	

The crocheted granny square contest will be judged on workmanship and completion of the greatest number of stitches using directions provided.

LARGE QUILTS – DIVISION 106

(At least 140 inches one length and one width combined)

Large quilts should be completed by only one person.

Enter large quilts done by at least one amateur and one professional in Amateur/Professional Quilt Collaboration – Division 107

Please read The Washington State Fair Departmental Exhibitors Rules and Regulations (see link on page 4) and the Home Arts General Rules on page 6.

Entry and release dates on page 5.

SOME THINGS JUDGES CONSIDER: Piecing/appliqué: technique, borders and sashing, quilting design and technique, binding or edges, corners, marking or soil.

Traditional quilts are defined as those made from historical designs that have been named and passed down from our ancestors. Contemporary quilts are “art quilts” that contain an element of creativity, are original and inventive, and are usually hung as art.

ADDITIONAL AWARDS:

Grand Champion –

Baby Lock “Anna” sewing machine, valued at \$399, **donated by**

Quality Sewing and Vacuum Center/ Tacony Corp., 2620 Bridgeport Way W, Suite D, University Place, WA 98466



Reserve Grand Champion – \$25

HAND QUILTED

Class	1st	2nd
4000. PIECED	\$20	\$15
4004. APPLIQUÉED.....	\$20	\$15
4008. MIXED TECHNIQUES (e.g., appliquéd/pieced).....	\$20	\$15

SEWING MACHINE QUILTED

Class	1st	2nd
4020. TRADITIONAL PIECED	\$20	\$15
4022. CONTEMPORARY PIECED.....	\$20	\$15
4024. TRADITIONAL APPLIQUE	\$20	\$15
4026. CONTEMPORARY APPLIQUE.....	\$20	\$15
4028. MIXED TECHNIQUES (e.g., appliquéd/pieced).....	\$20	\$15
4030. OTHER.....	\$20	\$15

MISCELLANEOUS QUILTING TECHNIQUES

Class	1st	2nd
4040. TIED.....	\$20	\$15
4042. OTHER (e.g., yoyo, rag, cathedral window) .	\$20	\$15
(No quilting machine entries will be accepted)		
(See division 101 for machine embroidery)		

AMATEUR GROUP PROJECT

Class	1st	2nd
4050. HAND QUILTED – any technique.....	\$20	\$15
4052. SEWING MACHINE QUILTED - any technique.....	\$20	\$15

AWARD OF MERIT

At the conclusion of the contest in each of the four Quilting Divisions, judges may designate up to two quilt entries (other than Grand and Reserve Grand Champions) for Awards of Merit (rosettes and \$25 premiums).

AMATEUR / PROFESSIONAL QUILT COLLABORATION – DIVISION 107

Please read The Washington State Fair Departmental Exhibitors Rules and Regulations (see link on page 4) and the Home Arts General Rules on page 6.

Entry and release dates on page 5.

This must be a quilt done by two or more persons including at least one amateur and one professional. See rule 7 on page 6 for the definition of a professional.

Large quilts measure at least 140 inches one width and one length combined. Small quilts measure less than 140 inches one length and one width combined.

Traditional quilts are defined as those made from historical designs that have been named and passed down from our ancestors. Contemporary quilts are “art quilts” that contain an element of creativity, are original and inventive, and are usually hung as art.

ADDITIONAL AWARDS:

Grand Champion – \$100

Reserve Grand Champion – \$25

Class	1st	2nd
4100.	HAND QUILTED, large,.....	\$20 \$15
4102.	HAND QUILTED, small,.....	\$20 \$15
4104.	TRADITIONAL – large, machine quilted	\$20 \$15
4106.	TRADITIONAL – small, machine quilted	\$20 \$15
4108.	TRADITIONAL – appliqué.....	\$20 \$15
4114.	CONTEMPORARY – large, machine quilted.	\$20 \$15
4116.	CONTEMPORARY – small, machine quilted.	\$20 \$15
4118.	CONTEMPORARY – appliqué	\$20 \$15
4119.	MIXED TECHNIQUES	\$20 \$15

PROFESSIONAL / MASTER QUILTERS – DIVISION 108

Please read The Washington State Fair Departmental Exhibitors Rules and Regulations (see link on page 4) and the Home Arts General Rules on page 6.

Entry and release dates on page 5.

These classes are offered for professional/master quilters. They will compete ONLY with one another and not with participants of amateur status. See rule 7 on page 6 for the definition of a professional. A master quilter is one who has won a Washington State Fair, amateur division once or served as a Washington State Fair quilt judge.

Large quilts measure at least 140 inches one width and one length combined. Small quilts measure less than 140 inches one length and one width combined.

Traditional quilts are defined as those made from historical designs that have been named and passed down from our ancestors. Contemporary quilts are “art quilts” that contain an element of creativity, are original and inventive, and are usually hung as art.

ADDITIONAL AWARDS:

Grand Champion – \$100

Reserve Grand Champion – \$25

Class	1st	2nd
4150.	TRADITIONAL – large, hand quilted.....	\$20 \$15
4152.	TRADITIONAL – small, hand quilted	\$20 \$15
4154.	TRADITIONAL – large, machine quilted	\$20 \$15
4156.	TRADITIONAL – small, machine quilted	\$20 \$15
4158.	TRADITIONAL – appliqué.....	\$20 \$15
4160.	CONTEMPORARY – large, hand quilted	\$20 \$15
4162.	CONTEMPORARY – small, hand quilted	\$20 \$15
4164.	CONTEMPORARY – large, machine quilted.	\$20 \$15
4166.	CONTEMPORARY – small, machine quilted.	\$20 \$15
4168.	CONTEMPORARY – appliqué	\$20 \$15
4169.	MIXED TECHNIQUES	\$20 \$15
4170.	APPAREL AND MISC. ITEMS.....	\$20 \$15
4172.	GROUP PROJECT.....	\$20 \$15

SMALL QUILTS – DIVISION 109

(Less than 140 inches one length and one width combined)

Small quilts should be completed by only one person.

Enter small quilts done by at least one amateur and one professional in Amateur/Professional Quilt Collaboration – Division 107.

Please read The Washington State Fair Departmental Exhibitors Rules and Regulations (see link on page 4) and the Home Arts General Rules on page 6.

Entry and release dates on page 5.

Traditional quilts are defined as those made from historical designs that have been named and passed down from our ancestors. Contemporary quilts are “art quilts” that contain an element of creativity, are original and inventive, and are usually hung as art.

ADDITIONAL AWARDS:

Grand Champion – \$100

Reserve Grand Champion – \$25

SMALL QUILTS – HAND QUILTED

Class		1st	2nd
4200.	TRADITIONAL PIECED	\$20	\$15
4202.	CONTEMPORARY PIECED.....	\$20	\$15
4204.	TRADITIONAL APPLIQUE	\$20	\$15
4206.	CONTEMPORARY APPLIQUE.....	\$20	\$15
4208.	MIXED TECHNIQUES (e.g., appliquéd/pieced).....	\$20	\$15
4210.	OTHER.....	\$20	\$15

SMALL QUILTS – MACHINE QUILTED

Class		1st	2nd
4220.	TRADITIONAL PIECED	\$20	\$15
4222.	CONTEMPORARY PIECED.....	\$20	\$15
4224.	TRADITIONAL APPLIQUE	\$20	\$15
4226.	CONTEMPORARY APPLIQUE.....	\$20	\$15
4228.	MIXED TECHNIQUES (e.g., appliquéd/pieced).....	\$20	\$15
4230.	OTHER.....	\$20	\$15

BABY QUILTS – HAND QUILTED

Class		1st	2nd
4240.	PIECED	\$10	\$5
4242.	APPLIQUÉED OR EMBROIDERED	\$10	\$5

BABY QUILTS – MACHINE QUILTED

Class		1st	2nd
4250.	PIECED	\$10	\$5
4252.	APPLIQUÉED OR EMBROIDERED.....	\$10	\$5
4254.	MACHINE APPLIQUÉED OR EMBROIDERED.....	\$10	\$5

AMATEUR GROUP PROJECTS

Class		1st	2nd
4260.	HAND QUILTED – any technique.....	\$10	\$5
4262.	MACHINE QUILTED – any technique	\$10	\$5

MISCELLANEOUS QUILTING TECHNIQUES

Class		1st	2nd
4265.	TIED.....	\$10	\$5
4267.	OTHER.....	\$10	\$5

PATCHWORK OR QUILTED MISC. ITEMS

Class		1st	2nd
4272.	PILLOW.....	\$10	\$5
4274.	MINIATURE QUILT (18" wide and 18" long, or less)	\$10	\$5
4276.	OTHER.....	\$10	\$5

QUILT CHALLENGE – DIVISION 110

“SPRING IS IN THE AIR”

Sponsored by
The Quilt Barn
2102 E Main Ave, Suite 102
Puyallup, WA 98372



The Quilt Challenge is open to all quilters 16 years of age and older.

Create a wall quilt using the theme, “Spring is in the Air” as your inspiration.

Register your entry online by August 7. When your online entry is received we will send you the 12 x 14 inch rectangle of fabric to begin this challenge project.

Refer to dates in Entry & Release Regular Schedule for Bringing In entry items and Entry Release/Return, on page 5.

Class	1st	2nd	3rd
4180. “Spring is in the Air” QUILT CHALLENGE.....	\$50	\$30	\$20

Prizes and 12" x 14" fabric pieces are donated by **The Quilt Barn**, Puyallup, WA.

QUILT CHALLENGE RULES

Please read The Washington State Fair Departmental Exhibitors Rules and Regulations (see link on page 4) and the Home Arts General Rules on page 6.

Your creation must utilize all of the fabric provided. Additional “Challenge” fabric may not be used.

Quilts must not exceed 72 inches length and width combined.

Additional fabrics, shape, techniques and embellishments are of your choice.

RUGS – DIVISION 111

Please read The Washington State Fair Departmental Exhibitors Rules and Regulations (see link on page 4) and the Home Arts General Rules on page 6.

Entry and release dates on page 5.

Rugs may not exceed 192 inches width plus length (e.g., 8' x 8'). Hangings may be mounted but must not exceed 70 inches length plus width, including mountings.

ADDITIONAL AWARDS

Grand Champion – \$100

Reserve Grand Champion – \$25

Class	1st	2nd
4500. LATCHET	\$10	\$5
4520. SHIRRET OR RUFFLE.....	\$10	\$5
4525. HOOKED, PRIMITIVE.....	\$10	\$5
4527. HOOKED, FINE SHADING	\$10	\$5
4530. CROCHET.....	\$10	\$5
4535. YOUR ORIGINAL DESIGN, ANY TYPE	\$10	\$5
4540. RUG TYPE WALL HANGING	\$10	\$5
4550. BRAIDED	\$10	\$5
4555. PILLOW USING ANY RUG TECHNIQUE.....	\$10	\$5
4560. OTHER.....	\$10	\$5

All soft toys are to be entered in Hobby Hall. To enter sewn, crocheted and knit doll CLOTHES ONLY, see Home Arts Divisions 100, 103 and 104.

LACE / OPEN WORK – DIVISION 112

Please read The Washington State Fair Departmental Exhibitors Rules and Regulations (see link on page 4) and the Home Arts General Rules on page 6.

Entry and release dates on page 5.

Front and back of work must be visible.

ADDITIONAL AWARDS:

Grand Champion – \$100

Reserve Grand Champion – \$25

BOBBIN LACE

Class	1st	2nd
5000. ALL-LACE PROJECTS, SMALL, up to 6" x 6" (e.g., book marks, medallions, etc.)	\$10	\$5
5005. ALL-LACE PROJECTS, LARGE, Larger than 6" x 6" (e.g., pictures, doilies, etc.)	\$10	\$5
5010. LACE AND FABRIC COMBINED	\$10	\$5

NEEDLE MADE LACE

*SEE DIVISION 101 FOR HARDANGER

Class	1st	2nd
5030. DRAWN, HOUSEHOLD (small – up to 12" in diameter)	\$10	\$5
5040. DRAWN, HOUSEHOLD (medium – 12" to 24" in diameter).	\$10	\$5
5050. DRAWN, HOUSEHOLD (larger than 24" in diameter, no mounting)	\$10	\$5
5080. OTHER (e.g., pulled, cut, mixed, garment etc.)\$10	\$5	\$5

TOOL MADE LACE – TATTING

Class	1st	2nd
5090. TATTING, DOILY.	\$10	\$5
5100. TATTING, ORNAMENT, JEWELRY	\$10	\$5
5120. TATTING, TRIMMED ITEM.	\$5	\$3
5121. TATTING, 3-D ITEM.	\$5	\$3
5122. TATTING, OTHER	\$5	\$3

TOOL MADE LACE – CROCHET

Class	1st	2nd
5126. CROCHET, ORNAMENT	\$5	\$3
5130. CROCHET (small - up to 12" in diameter) . . .	\$5	\$3
5135. CROCHET (medium - 13" to 24" in diameter)	\$5	\$3
5140. CROCHET (larger than 24" in diameter). . .	\$10	\$5
5145. CROCHET – TABLECLOTH, THREAD (not to exceed 225" width and length combined)	\$20	\$15
5146. CROCHET – BEDSPREAD, THREAD (not to exceed 225" width and length combined)	\$20	\$15
5147. CROCHET – GARMENTS, thread.	\$10	\$5
5148. CROCHET – INFANT WEAR (3 pieces or less)	\$10	\$5
5150. CROCHET DOLL CLOTHES, 3 pieces or less (doll up to 12" optional – the judge must see the inside of the clothes). . .	\$5	\$3
5151. CROCHET, HOUSEHOLD ITEM.	\$5	\$3
5154. CROCHET CLOTHING ACCESSORIES	\$5	\$3
5157. CROCHET YARN MADE LACE.	\$5	\$3
5158. CROCHET, OTHER.	\$5	\$3

TOOL MADE LACE – KNIT

Class	1st	2nd
5162. KNIT – TABLECLOTH OR BEDSPREAD, thread (not to exceed 225 inches width and length combined)	\$20	\$15
5164. KNIT – GARMENTS (very fine yarn only) . . .	\$10	\$5
5166. KNIT – HOUSEHOLD ITEM	\$5	\$3
5167. KNIT – BEADED ITEM.	\$5	\$3
5168. KNIT – CLOTHING ACCESSORIES	\$5	\$3
5172. KNIT - YARN MADE LACE	\$5	\$3
5173. KNIT, OTHER.	\$5	\$3

WEAVING – DIVISION 113

Please read The Washington State Fair Departmental Exhibitors Rules and Regulations (see link on page 4) and the Home Arts General Rules on page 6.

Entry and release dates on page 5.

ADDITIONAL AWARDS:

Grand Champion –
Baby Lock “Rachel” Sewing Machine
valued at \$799 **donated by**
Quality Sewing and Vacuum Center/
Tacony Corp., 2620 Bridgeport Way W,
Suite #D, University Place, WA 98466



Reserve Grand Champion – \$25

HANDWOVEN HOUSEHOLD ARTICLE

Please include fiber content on
a 3 x 5 inch index card

Class	1st	2nd
5510. BLANKET, AFGHAN OR COVERLET	\$10	\$5
5515. BLANKET, AFGHAN OR COVERLET, (more than 4 harnesses).....	\$10	\$5
5520. TABLE RUNNER, SET OF 4 PLACE MATS OR TABLECLOTH.....	\$10	\$5
5525. TABLE RUNNER, SET OF 4 PLACE MATS OR TABLECLOTH (more than 4 harnesses).....	\$10	\$5
5530. BATH OR KITCHEN TOWEL.....	\$5	\$3
5535. BATH OR KITCHEN TOWEL (more than 4 harnesses)	\$5	\$3
5540. YARDAGE (3 yard min., finished for intended use, state intended use)	\$10	\$5
5550. TAPESTRY.....	\$10	\$5
5560. HANDWOVEN RUG.....	\$10	\$5
5565. OTHER.....	\$5	\$3

HANDWOVEN MAGAZINE'S WEAVING FOR THE HOME AWARD OF EXCELLENCE

Interweave Press is offering *Handwoven Magazine's* WEAVING FOR THE HOME Award of Excellence. The purpose is to recognize and encourage excellence in hand weaving functional items for the home (no garments, wall hangings or art objects). Good design principles, suitability of materials and techniques to the intended use, excellent craftsmanship and a fresh or unexpected element are essential.

HANDWOVEN GARMENT

Please include fiber content on
a 3 x 5 inch index card

Class	1st	2nd
5570. OUTERWEAR (coat, poncho, cape)	\$15	\$10
5585. BLOUSE SHIRT, SKIRT OR DRESS	\$10	\$5
5590. VEST OR TABARD	\$10	\$5
5595. OTHER GARMENT (embellishment woven with novelty yarn)	\$10	\$5
5610. SHAWL, STOLE OR SHRUG.....	\$10	\$5
5615. SCARF.....	\$5	\$3
5620. ACCESSORIES.....	\$5	\$3

HANDWEAVERS GUILD OF AMERICA AWARD

The Handweavers Guild of America Award will honor a piece in the Weaving, Spinning or Basketry Divisions, which:

- Shows a fresh individual approach and expresses personal creativity.
- Shows an awareness of aesthetic and functional considerations.
- Demonstrates competence in technical skill.

The award carries a certificate and a hand-woven ribbon.

SPINNING – DIVISION 114

Please read The Washington State Fair Departmental Exhibitors Rules and Regulations (see link on page 4) and the Home Arts General Rules on page 6.

Entry and release dates on page 5.

ADDITIONAL AWARDS:

Grand Champion – \$100

Reserve Grand Champion – \$25

HANDSPUN YARN

A 4 x 4 inch fabric swatch of the intended use of the yarn must accompany entry skein. May be knit, crocheted or woven.

Please specify intended use, skein weight, yardage and fiber content on a 3 x 5 inch index card. We encourage you to include a small amount of fiber used in spinning in a small ziplock bag. Skein must be 1 oz. or more in weight. Yarn should be wound on a two-yard niddy-noddy and gently figure-eight tied in four places.

Class	1st	2nd
6000. WOOL – SINGLES	\$5	\$3
6005. WOOL – 2 PLY – fine.	\$5	\$3
6008. WOOL – 2 PLY – medium.....	\$5	\$3
6010. WOOL – 2 PLY – heavy	\$5	\$3
6014. WOOL – MULTIPLE PLY	\$5	\$3
6016. DROP SPINDLE YARN.....	\$5	\$3
6020. BLENDED FIBERS.....	\$5	\$3
6022. NOVELTY YARN, unusual technique.....	\$5	\$3
6028. SILK	\$5	\$3
6030. HAND DYED YARN,.....	\$5	\$3
6038. PLANT FIBER (e.g., cotton, linen, ramie)	\$5	\$3
6040. OTHER ANIMAL FIBER (e.g., dog, mohair)....	\$5	\$3

USE OF HANDSPUN YARN

Include a 3 foot butterfly of yarn and fiber content on a 3 x 5 inch index card.

Class	1st	2nd
6050. LOOM WOVEN ARTICLE	\$10	\$5
6055. LOOM WOVEN ARTICLE, (using novelty yarn)	\$10	\$5
6070. KNITTED SWEATER.....	\$10	\$5
6075. KNITTED ARTICLES (items not found in other classes)	\$10	\$5
6076. KNITTED ARTICLES (using novelty yarn)....	\$10	\$5
6080. OTHER TECHNIQUES	\$10	\$5
6090. SMALL ARTICLES, (mittens, hats, etc.).....	\$5	\$3
6095. SOCKS.....	\$5	\$3
6100. BABY CLOTHES – up to 3 pieces	\$5	\$3

USE OF FLEECE OR FELTED WOOL

Please include fiber content on a 3 x 5 inch index card.

Class	1st	2nd
6110. NON-WOVEN FELTED ARTICLE – FLAT.....	\$10	\$5
6115. NON-WOVEN FELTED ARTICLE – 3-D.....	\$10	\$5
6120. WADMAL ARTICLE	\$10	\$5
6125. NUNO FELTING	\$10	\$5
6130. OTHER.....	\$10	\$5

BASKETRY – DIVISION 115

Please read The Washington State Fair Departmental Exhibitors Rules and Regulations (see link on page 4) and the Home Arts General Rules on page 6.

Entry and release dates on page 5.

ADDITIONAL AWARDS:

Grand Champion – \$100

Reserve Grand Champion – \$25

(A minimum of three exhibitors is required for granting this award. See page 6 "AWARDS".)

COILED AND KNOTTED

Class		1st	2nd
6140.	FUNCTIONAL	\$10	\$5
6145.	FREE FORM	\$10	\$5
6155.	OTHER.....	\$10	\$5

TWINED

Class		1st	2nd
6160.	FUNCTIONAL	\$10	\$5
6165.	FREE FORM	\$10	\$5
6170.	MINIATURE, 4" x 4" x 4" max.....	\$10	\$5
6175.	OTHER.....	\$10	\$5

WOVEN – SPLINTWORK AND PLAITING

Class		1st	2nd
6180.	FUNCTIONAL	\$10	\$5
6185.	FREE FORM	\$10	\$5
6190.	MINIATURE, 4" x 4" x 4" max.....	\$10	\$5
6195.	OTHER.....	\$10	\$5

RIB STYLE AND WICKER WORK

Class		1st	2nd
6200.	FUNCTIONAL	\$10	\$5
6215.	OTHER.....	\$10	\$5

MISCELLANEOUS VESSELS

(e.g., Folded, Looped, Gourds incorporating Basketry Techniques)

Class		1st	2nd
6220.	FUNCTIONAL	\$10	\$5
6225.	FREE FORM	\$10	\$5
6235.	OTHER.....	\$10	\$5

PROFESSIONAL / MASTER BASKET MAKER – DIVISION 116

Please read The Washington State Fair Departmental Exhibitors Rules and Regulations (see link on page 4) and the Home Arts General Rules on page 6.

Entry and release dates on page 5.

Five classes are offered for professional/master basket makers. They will compete ONLY with one another and not with participants of amateur status. See rule 7 on page 6 for the definition of a professional. A master basket maker is one who has won an amateur division once, been a recipient of ribbons at a national basketry show or served as a Washington State Fair basketry judge.

ADDITIONAL AWARDS:

Grand Champion – \$100

Reserve Grand Champion – \$25

(A minimum of three exhibitors is required for granting this award – see page 4, "AWARDS".)

Class		1st	2nd
6300.	COILED AND KNOTTED.....	\$10	\$5
6305.	TWINED	\$10	\$5
6310.	WOVEN – splint work and plaiting	\$10	\$5
6315.	RIB STYLE AND WICKER WORK.....	\$10	\$5
6320.	MISCELLANEOUS VESSELS (e.g., folded, looped, gourds incorporating basketry techniques).....	\$10	\$5

PLEASE NOTE:

Please see separate **HOME ARTS - FOODS PREMIUM LIST** for **Preserved Foods**, **Culinary Arts** and **Table Setting** entry information.

Click here:

[COMPETITIVE EXHIBIT ENTRIES](#)