

FINE ART SHOW

PREMIUM LIST

DIRECTOR IN CHARGE

Candace Blancher

SUPERINTENDENT

Debbie Yoder

Wafairfinearts@outlook.com

COMPETITIVE EXHIBITS OFFICE

Washington State Fair

Hours: Mon.–Fri., 8 am – 4:30 pm

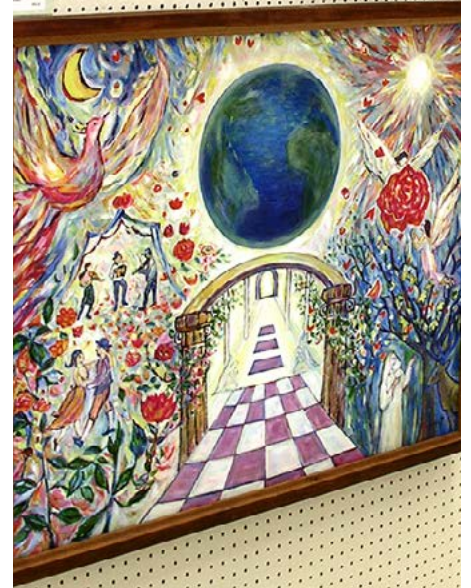
Phone: (253) 841-5074

Email: CompExhibits@thefair.com

WASHINGTON STATE FAIR

AUG. 30 – SEPT 22, 2019
(CLOSED TUESDAYS & SEPT. 4)

110 9th Avenue SW, Puyallup WA 98371-6811
24-Hour Hotline: 253-841-5045 | THEFAIR.COM



2019 FINE ART SHOW CALENDAR

Online Entry Registration begins
MONDAY, APRIL 22, 2019

SUN	MON	TUE	WED	THU	FRI	SAT
					JUL. 26	JUL. 27
					ONLINE ENTRY REGISTRATION DUE by 10pm	
JUL. 28	JUL. 29	JUL. 30	JUL. 31	AUG. 1	AUG. 2	AUG. 3
		BRING IN ENTRIES 10am-4pm	BRING IN ENTRIES 10am-4pm	BRING IN ENTRIES 2pm-8pm		
AUG. 4	AUG. 5	AUG. 6	AUG. 7	AUG. 8	AUG. 9	AUG. 10
AUG. 11	AUG. 12	AUG. 13	AUG. 14	AUG. 15	AUG. 16	AUG. 17
					<i>Release of all NON-ACCEPTED entries, 10am-4pm</i>	<i>Release of all NON-ACCEPTED entries, 9am-3pm</i>
AUG. 18	AUG. 19	AUG. 20	AUG. 21	AUG. 22	AUG. 23	AUG. 24
AUG. 25	AUG. 26	AUG. 27	AUG. 28	AUG. 29	AUG. 30	AUG. 31
					OPENING DAY OF FAIR	
SEPT. 1	SEPT. 2	SEPT. 3	SEPT. 4	SEPT. 5	SEPT. 6	SEPT. 7
		FAIR CLOSED	FAIR CLOSED			
SEPT. 8	SEPT. 9	SEPT. 10	SEPT. 11	SEPT. 12	SEPT. 13	SEPT. 14
		FAIR CLOSED				
SEPT. 15	SEPT. 16	SEPT. 17	SEPT. 18	SEPT. 19	SEPT. 20	SEPT. 21
		FAIR CLOSED				
SEPT. 22	SEPT. 23	SEPT. 24	SEPT. 25	SEPT. 26	SEPT. 27	SEPT. 28
LAST DAY OF FAIR		<i>Release of all ACCEPTED entries, 9am-8pm</i>	<i>Release of all ACCEPTED entries, 9am-6pm</i>			

CONTENTS

2019 CALENDAR	2
LINKS TO IMPORTANT FAIR INFORMATION	4
<i>Online Entry Registration Instructions</i>	4
Eligibility	5
Requirements.....	5
Divisions.....	6
2019 Special Competition	6
Conditions For Entry – Dates and Times.....	7
Judging and Awards.....	8
Conditions for Release – Dates & Times.....	8
Sales Agreement.....	9

NEW FOR 2019

WE'VE MOVED

The Fine Arts Department has changed location and we couldn't be more excited. The new space is housed in the building now known as The Mattress Firm Showplex Conference Center (formerly Hobby Hall). There will be all new fixtures and a fresh new look. It is an exciting time to participate and be involved.

AWARD MONEY

The Fair has increased the total amount of award money to \$5000 this year. We are now offering a monetary award to honorable mentions. There will be four honorable mentions awarded for each division and six awarded for miniatures.

UPDATE ON ENTRY CONDITIONS

Please note that **artwork must be submitted by the artist that created it**. Galleries and art owners may not enter another artists work. If artwork needs to be delivered by a person other than the artist, **a written consent from the artist must accompany the entry**.

2019 SPECIAL COMPETITION CATS: WILD, DOMESTIC AND EXOTIC

From the timid cat to the ferocious caracal, there are over 202 breeds of cats in the world. More than 100 different domestic cat breeds, over 66 breeds of exotic cats and 36 to 40 species of wild cats can be found throughout the world.

This competition is about your creative interpretation of capturing the traits, individualism and personalities of felines. What breed would you like to showcase through your art medium? See Divisions for details.

TO ENTER

1. Review entire prospectus
2. Determine division(s) for artwork
3. Register online
4. Print out contract for each piece of art and bring it in with your entry
5. Note dates and requirements for drop off and pick up

Washington STATE FAIR

DO THE PUYALLUP!

AUG. 30 – SEPT. 22, 2019

(CLOSED TUESDAYS & SEPT. 4)

By submitting an entry into The Fair, exhibitors agree to abide by all rules, regulations and entry requirements of the Fair and of the department(s) to which they are submitting their entries. **It is important that exhibitors read and be familiar with the rules in this book, as well as:**

[Washington State Fair Departmental Exhibitors Rules and Regulations](#)

Vehicle Unloading Procedures:

[Vehicle Unloading Procedures](#)

Washington State Fair map:

[Washington State Fair map](#)

You may not find it necessary to print this entire Premium List. While we ask that you **read and be familiar with the information in the Premium List prior to entry, please feel free to print just the pages you need.**

Online Entry Registration Instructions

Read below, then register entry information online before bringing items to Fair.

www.thefair.com

- Read the complete rules, department and division descriptions, and entry information in this Premium List **BEFORE** going to online entry registration.
- Then, go to the Fair's **[ONLINE ENTRY REGISTRATION](#)** page (**available starting April 22**).
- Click **[Login/Logoff](#)** and choose your **Type: Exhibitor**
 - Register using your First Name and Last Name and create a password (*write your password down or make sure it is something you will remember for future use.*) Fill in requested information, including email address. Click **[Continue](#)**.
- Click **[Create Entries](#)**. For each entry:
 - Select a **[Department](#)** ex.: *Fine Art*
 - Select a **[Division](#)** ex.: *Mixed Media - Division 304*
 - Select a **[Class](#)** ex.: *class 01 - Mixed Media, piece #1*
Fill in all requested information for the class(es) you are entering:
ex.: **[Title](#)**: *Serenity in the Rain*
[Description](#): *'yellow flowers in pond', or 'old man in blue shirt'*
NOTE: If your artwork consists of multiple pieces to be judged as one entry (such as triptychs or sets) indicate number of pieces in the description!
- When you have completed entering all your information, click **[Continue](#)** and follow the instructions to check out.
- Fill in "yes" at the statement to agree to all the terms and conditions of entry as defined in this prospectus.
- Click Submit.
- **[Print and bring a copy of your online entry summary/receipt with your artwork.](#)**
- **[Print and bring a signed copy of the contract for each piece of artwork.](#)**
- For questions regarding online entry registration, contact: 253-841-5074, CompExhibits@thefair.com

WASHINGTON STATE FAIR FINE ART SHOW

AUG. 30 - SEPT. 22, 2019
(CLOSED TUESDAYS & SEPT. 4)

PURPOSE OF SHOW

The Washington State Fair Fine Art Show is a juried, competitive art event celebrating local artists with an opportunity to display and sell their accepted work.

ELIGIBILITY

- Artists must be at least **18 years old**
- **Artwork must be entered by the artist** with a signed contract from that artist. Art owners or galleries may not enter another artist's work.
- **Artwork must be original.** No print reproductions, including Giclee, except as defined in our Mixed Media and Digital Art divisions. Copies made from published sources, copyrighted materials, or non-original photographs will be cause for removal from the show and forfeiture of any awards.
- **Artwork done under** specific instructor guidance cannot be accepted.

REQUIREMENTS

- Each artist may **enter two (2) pieces of art in each division.**
- Art must have been created within the last three years and not have been previously accepted in this show.

ENTRY FEE

- Entry fee: **\$6.00 per piece** in all divisions except miniatures. Fee for miniatures is **\$3.00 per piece**. Entry fees are non-refundable.

SIZE OF ARTWORK ACCEPTED

- **Minimum** outside frame dimensions for paintings, drawings and mixed media are 11" x 14". **Maximum** frame size is 5' x 6'. **Maximum** size for miniatures are 35 square inches using outside of frame dimensions.

FRAMING

- **All pictures must be properly framed, dry and ready to hang.**
- For hanging use adequate, **weight-bearing, woven picture wire ONLY.** Wire should be anchored to frame sides 1/3 down from top of frame. No clamp plastic, glass frames or "poster frames." Metal frames must have wires. Saw-tooth hangers are acceptable on miniatures only if wire is not possible.
- **"Gallery Wrapped"** canvases must have painted edges that are either a continuation of the front painting or a solid color. **Solid white edges are not acceptable.**
- The artwork must appear free of visible nails and/or staples.
- **All frames will be thoroughly inspected upon submission.** A minimum charge of up to \$5 per piece will be made for minor alterations. An entry may be rejected until proper adjustments are made by the artist and piece may be resubmitted before close of receiving on Thursday, Aug. 1. Be sure your artwork meets show requirements; entry fees are non-refundable.
- Entries must be framed and matted except canvas work. Because of weight, plexiglas is preferred for larger frames. Paintings must be handled and moved several times during preparation and tear down of the show, therefore only very sturdy metal or wood frames holding glass can be accepted. A signed damage waiver may be required at time of entry for large frames with glass that requires special handling.
- Watercolors, pastels, drawings, and prints including computer prints must be under glass or plexiglas.
- Place a label on lower left back of framed artwork or underside of sculptures, showing artist name and title of work.

DIVISIONS

WATERCOLOR – DIVISION 301

This division is for artwork that uses a water based medium. It can include watercolor paint, inks, acrylics and gouche.

- Mediums must be applied in a transparent technique on paper or canvas and must be framed, matted and under glass or plexi-glass.
- Giclee or print reproductions are not accepted.

OILS / ACRYLIC – DIVISION 302

This division is for artwork that use oil, acrylic or gouache paint as a medium

- The paint must be applied in an opaque technique on canvas.
- Gallery wrapped canvas is accepted in this division, sides must be finished with paint.
- All other artwork must be under glass or plexi-glass, framed and matted.
- Giclee or print reproductions are not accepted.

DRAWING – DIVISION 303

This division is for artwork that uses techniques with pen, ink, pencil, charcoal and pastel mediums. Scratchboard is accepted in this division.

- All drawings must be under glass or plexi-glass, framed and matted.
- Scratchboard needs to be framed, but does not need to be under glass.
- Giclee or print reproductions are not accepted

MIXED MEDIA – DIVISION 304

This division is for artwork that is either two dimensional or three dimensional in design.

- The artwork must contain two or more different mediums in addition to a foundation that the artwork is designed on. Techniques and processes are not considered a medium. Mediums include such things as paint, paper, metals, fabric, wax, etc. Photo copies and digital art are not accepted as a medium in this division.
- All mixed media artwork must be properly framed or suitable for display by hanging.
- All entries must have an attached list of all mediums used on the back of the artwork for entry and judging consideration.

SCULPTURE – DIVISION 305

This division is for three dimensional artwork that is free standing and made from art mediums such as metal, fired clay, fabrics, glass, etc. (unfired clay will not be accepted).

- Larger art pieces will require pre-approval due to limited space. The artist will be responsible for installing their own artwork, if accepted.
- Sculptures are not eligible for late pick up due to limited storage space.

DIGITAL ART – DIVISION 306

This division is for two dimensional artwork, created partially or totally through the use of a computer.

- Components must be original work of the submitting artist.
- All entries must include a brief description of the creative process, general techniques and programs used. Include printing process and/or hand applied enhancements. This is to be turned in to the entry table at the time the artwork is dropped off in order to have your artwork judged.

MINIATURE – DIVISION 307

- All mediums from the previous divisions are accepted in miniatures.
- Maximum size accepted is 35 square inches from the outside of the frame.
- Miniatures must have hangers (preferably wire).
- All miniatures must be for sale, priced at \$200 and under.

2019 SPECIAL COMPETITION CATS: WILD, DOMESTIC AND EXOTICS

ALL DIVISIONS ARE ELIGIBLE EXCEPT MINIATURES.

Your entry must first be submitted in one of our regular Divisions. It will count as one of the two entries allowed. Only one submission per artist is allowed for this Special Competition. Selection of the winner for this competition will be made after the regular show judging has been completed.

The winner of this competition will receive an award of \$250.

CONDITIONS FOR ENTRY – DATES & TIMES

REGISTER ONLINE

April 22 - July 26

Online registration must be completed and paid for by July 26. **See step-by-step instructions on page 4.**

BRING YOUR ARTWORK

- Tuesday, July 30, 10 am – 4 pm
 - Wednesday, July 31, 10 am – 4 pm
 - Thursday, Aug. 1, 2 – 8 pm
- NO RECEIVING ON FRIDAY, AUG. 2nd**

Artwork for entry must be delivered to and picked up from the Mattress Firm Showplex Conference Center (former Hobby Hall) at the Washington State Fair. Walk-in entrance is through the Gold Gate. Free parking is available in the Gold Parking Lot. Drive-in entry is available through the Gold Gate for heavy, oversized items. Only limited parking is available on the grounds and is restricted to a maximum of one hour. Vehicles entering the grounds may be subject to inspection. Please mark your calendar with the “Release” dates. Artwork that is left after specified pick-up dates will require special arrangements with the Fair for pick up during normal business hours only.

GENERAL CONDITIONS

- **Every Fine Art Show entry must be accompanied by a signed [Agreement for Entry/Sale of Artwork](#) (on page 9 of this document.)**
- **A 25% commission will be charged on all sold artwork.**
- Available gallery space limits the number of artwork pieces that can be accepted.
- No changes can be made to either the for sale status or the price of an entry after it is judged. To maintain the integrity of the show, no paintings can be removed until published release dates (see page 8).
- While we would prefer all work be for sale, we accept Not For Sale (NFS) work on a limited basis – see Second Show for additional information. Judging is not affected by sales status.
- Multiple pieces entered as a set are to be judged, hung and sold as a set-no exceptions. Due to limited space, up to **three** multiple image pieces are allowed **Each piece must be a minimum 11” x 14” with total dimensions not to exceed a 5’x 6’ space.**

- **Please note** - during online registration when you are asked for a “**Description**” of your artwork we are asking for a brief description of the image itself such as “Portrait of old man in blue shirt”. These descriptions are used to identify your specific work during handling and hanging. For Digital Art only, this is not where you describe your process or techniques and programs that were used to create your image. You are asked to submit a separate paper detailing that information when you bring in your artwork for entry. When asked for your “**Medium**,” please tell us what actual mediums (oil, watercolor, ink, pencil, pen, etc) you used to create your piece – not the Division you entered. For Mixed Media entries our judges need to know the top two or more mediums you used, to assist in their evaluation of your work.
- [See step-by-step ONLINE entry registration instructions on page 4.](#) Fill out registration forms and pay online by July 27. Bring a copy of your printed online registration summary/receipt with your items on receiving days.

SECOND SHOW

In order to provide the opportunity for additional artists’ work to be displayed, up to 50 juried paintings may be randomly selected and held back for a Second Show. **Second Show does not mean “second best”**. Selected paintings (including miniatures) which are sold during the first 10 days of the Fair (but not award winners) **and selected Not For Sale (NFS) paintings as necessary**, will be replaced by these paintings on Sept. 10.

DISCLAIMERS

- Although every precaution will be made to safeguard the artwork, the Washington State Fair will not be responsible for theft, damage (including glass breakage) or loss of entries. Each artist acknowledges that their artwork will be displayed in public and there is no guarantee or assurances of any kind for the protection of the artwork.
- **The Fair reserves the right to not accept artwork or remove any artwork from display at any time, for any reason and at their own discretion.**
- Entries cannot be accepted or returned by mail or common carrier.
- Should questions arise concerning the eligibility of an entry, the Fair’s decision will be respected as final. The Fair assumes no liability for breaches of copyright by exhibitor.

JUDGING AND AWARDS

Judges are selected from professionals or highly accredited amateur artists working within their field of expertise. Neither paid Fair employees nor volunteers are eligible to judge in the department for which they work. Paid Fair employees or volunteers who judge any show or contest outside the department they work for must be pre-approved by their department supervisor. Fair exhibitors, including exhibiting employees, are not eligible to judge in their entry divisions.

TOTAL AWARDS

Best of Show	\$400
First Place (each division except miniatures)	\$250
Second Place (each division except miniatures)	\$150
Third Place (each division except miniatures)	\$75
Fourth Place (each division except miniatures)	\$50
Honorable Mention (four each division)	\$25
First Place (miniature only)	\$100
Second Place (miniature only)	\$75
Third Place (miniature only)	\$50
Fourth Place (miniature only)	\$35
Honorable Mention (six - miniature only)	\$25
People's Choice Main Show (one per day)	\$10
People's Choice Miniatures (one per day)	\$10
Directors' Purchase Award	Price of artwork
Special Competition: "Cats: Wild, Domestic"	\$250

JUDGING RESULTS

Award winners will be notified by mail prior to The Fair start date.

AWARDS PRESENTATIONS AND PREVIEW EVENT

This event is held **by invitation only**. Only award winners, their guest, and those who have received a written invitation should attend.

CONDITIONS FOR RELEASE – DATES & TIMES

Artwork for entry must be picked up from the Mattress Firm Showplex Conference Center (Former Hobby Hall)

PICK-UP YOUR ARTWORK

NON-ACCEPTED RETURNS:

Friday, Aug. 16, 10 am – 4 pm
Saturday, Aug. 17, 9 am – 3 pm

ACCEPTED RETURNS:

Tuesday, Sept. 24, 9 am – 8 pm
Wednesday, Sept. 25, 9 am – 6 pm

UNCLAIMED ARTWORK

Unsold artwork left beyond the accepted return dates without prior special arrangements with The Fair will become the property of The Fair.

ACKNOWLEDGMENT OF TERMS

ALL CONDITIONS OF ELIGIBILITY, DIVISIONS AND INSTRUCTIONS must be followed to ensure your ENTRIES can be accepted and judged.

FOR MORE INFORMATION:

Washington State Fair,
Competitive Exhibits Office
253-841-5074
or E-mail: CompExhibits@thefair.com

Washington STATE FAIR

DO THE PUYALLUP!

AUG. 30 - SEPT. 22, 2019
(CLOSED TUESDAYS AND SEPT. 4)

For additional
WASHINGTON STATE FAIR
information, driving directions, concert lineup, etc.:
Website: www.thefair.com
24-Hr. Hotline: 253-841-5045

AGREEMENT FOR ENTRY / SALE OF ARTWORK

The undersigned agrees to all of the Premium List entry, eligibility, requirements and conditions to the following:

Section 1: Title of the artwork is: _____

Section 2: Medium: _____

Section 3: The value of the artwork, as determined by the artist, is \$ _____. Artist agrees that the price of the artwork offered for sale will be \$ _____, which shall be the minimum price acceptable to artist.

Section 4: Artwork must be submitted by the original artist who created the piece.

Section 5: Commission. If the artwork is sold, Artist agrees to pay the Fair a commission equal to twenty-five percent (25%) of the sale price of the artwork.

Section 6: Payment of proceeds. The proceeds from the sale of the artwork shall be paid to Artist within thirty (30) days of close of Fair.

Section 7: Display. The Fair shall be permitted to display the artwork entered.

Section 8: Artist Recognition. The Fair agrees to give recognition to the Artist by labeling their artwork for public viewing.

Section 9: Disclaimer. Although every precaution will be made to safeguard the artwork, the Fair will not be responsible for theft, damage (including glass breakage) or loss of entries. Each artist acknowledges that selected artwork will be displayed in public and there is no guarantee or assurance of any kind for the protection of the artwork.

Section 10: Governing Law. This Agreement shall be governed according to the laws of the state of Washington. In the event that legal action is undertaken to enforce or interpret any portion of this Agreement, the parties agree that venue shall lie in Pierce County, Washington.

Dated this _____ day of _____, 2018.

Artist Signature (18yrs or older): _____

Print Name: _____

Fair Associate: _____

**PRINT AND COMPLETE TWO CONTRACTS FOR EACH PIECE OF ART
AND SUBMIT AT TIME OF ENTRY.**

AGREEMENT FOR ENTRY / SALE OF ARTWORK

The undersigned agrees to all of the Premium List entry, eligibility, requirements and conditions to the following:

Section 1: Title of the artwork is: _____

Section 2: Medium: _____

Section 3: The value of the artwork, as determined by the artist, is \$ _____. Artist agrees that the price of the artwork offered for sale will be \$ _____, which shall be the minimum price acceptable to artist.

Section 4: Artwork must be submitted by the original artist who created the piece.

Section 5: Commission. If the artwork is sold, Artist agrees to pay the Fair a commission equal to twenty-five percent (25%) of the sale price of the artwork.

Section 6: Payment of proceeds. The proceeds from the sale of the artwork shall be paid to Artist within thirty (30) days of close of Fair.

Section 7: Display. The Fair shall be permitted to display the artwork entered.

Section 8: Artist Recognition. The Fair agrees to give recognition to the Artist by labeling their artwork for public viewing.

Section 9: Disclaimer. Although every precaution will be made to safeguard the artwork, the Fair will not be responsible for theft, damage (including glass breakage) or loss of entries. Each artist acknowledges that selected artwork will be displayed in public and there is no guarantee or assurance of any kind for the protection of the artwork.

Section 10: Governing Law. This Agreement shall be governed according to the laws of the state of Washington. In the event that legal action is undertaken to enforce or interpret any portion of this Agreement, the parties agree that venue shall lie in Pierce County, Washington.

Dated this _____ day of _____, 2018.

Artist Signature (18yrs or older): _____

Print Name: _____

Fair Associate: _____

**PRINT AND COMPLETE TWO CONTRACTS FOR EACH PIECE OF ART
AND SUBMIT AT TIME OF ENTRY.**